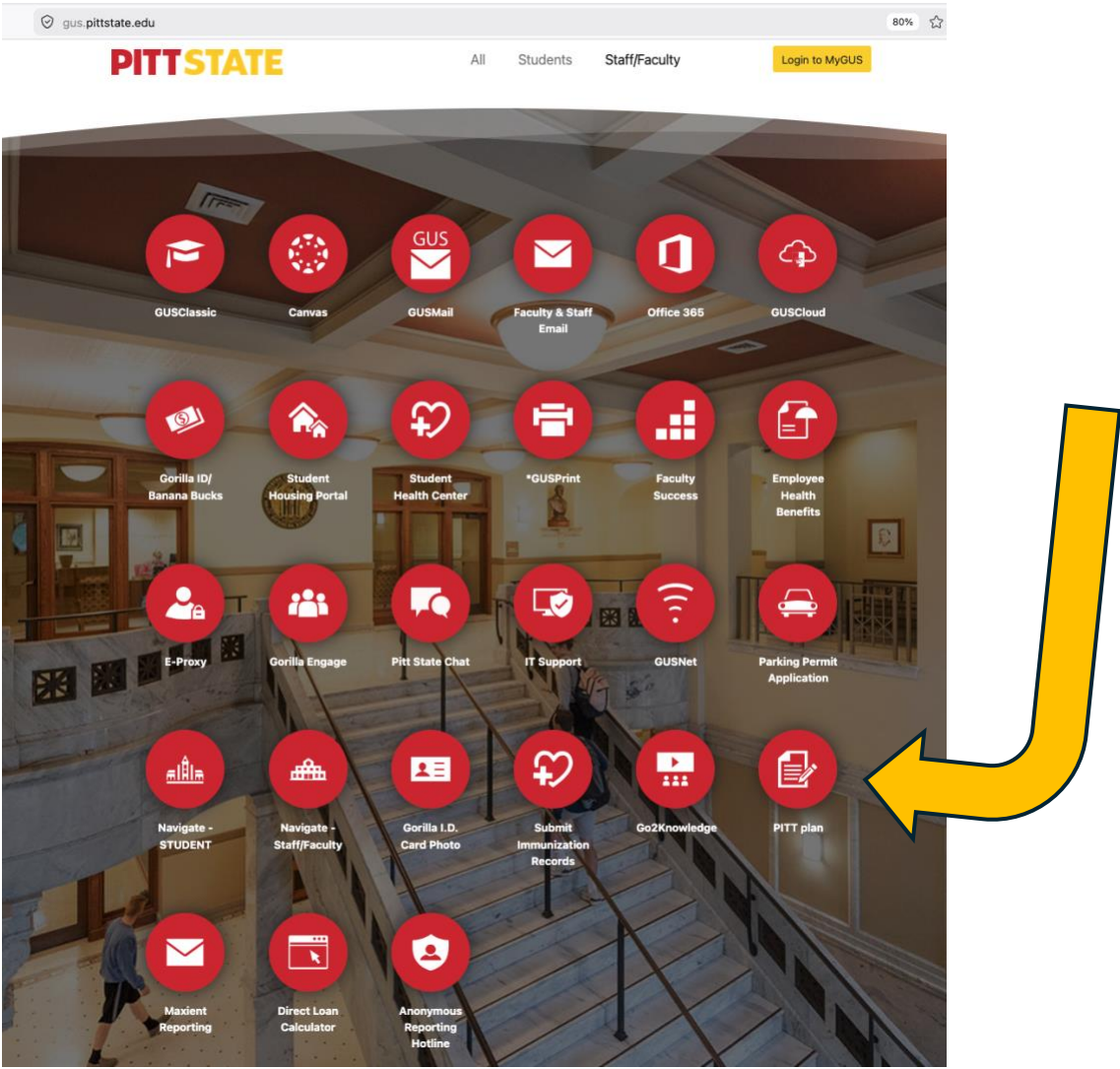


PITT plan – login & initiative acceptance

- 1. Where to go to log in page 1
- 2. Logging in page 2
- 3. Accepting an initiative invitation page 4

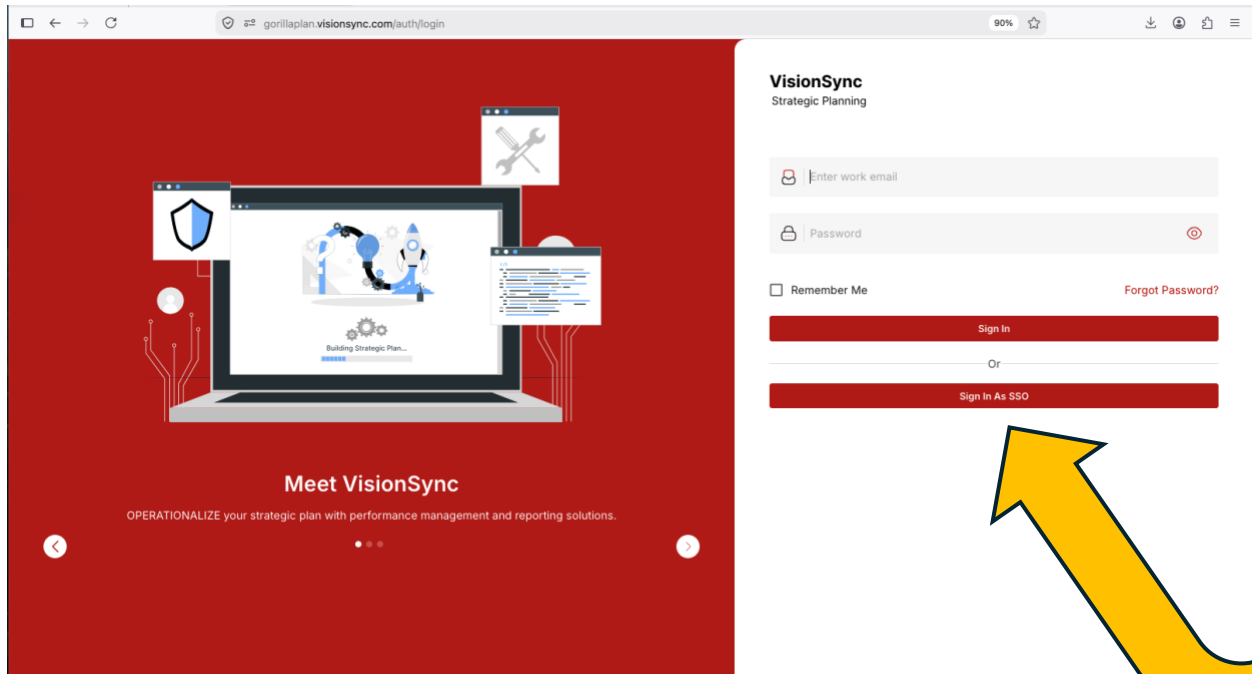
1. Log into the PITT plan system from the GUS Portal:



2. PITT plan uses your PSU single sign on (SSO) credentials – so the same as your email, GUS, etc.

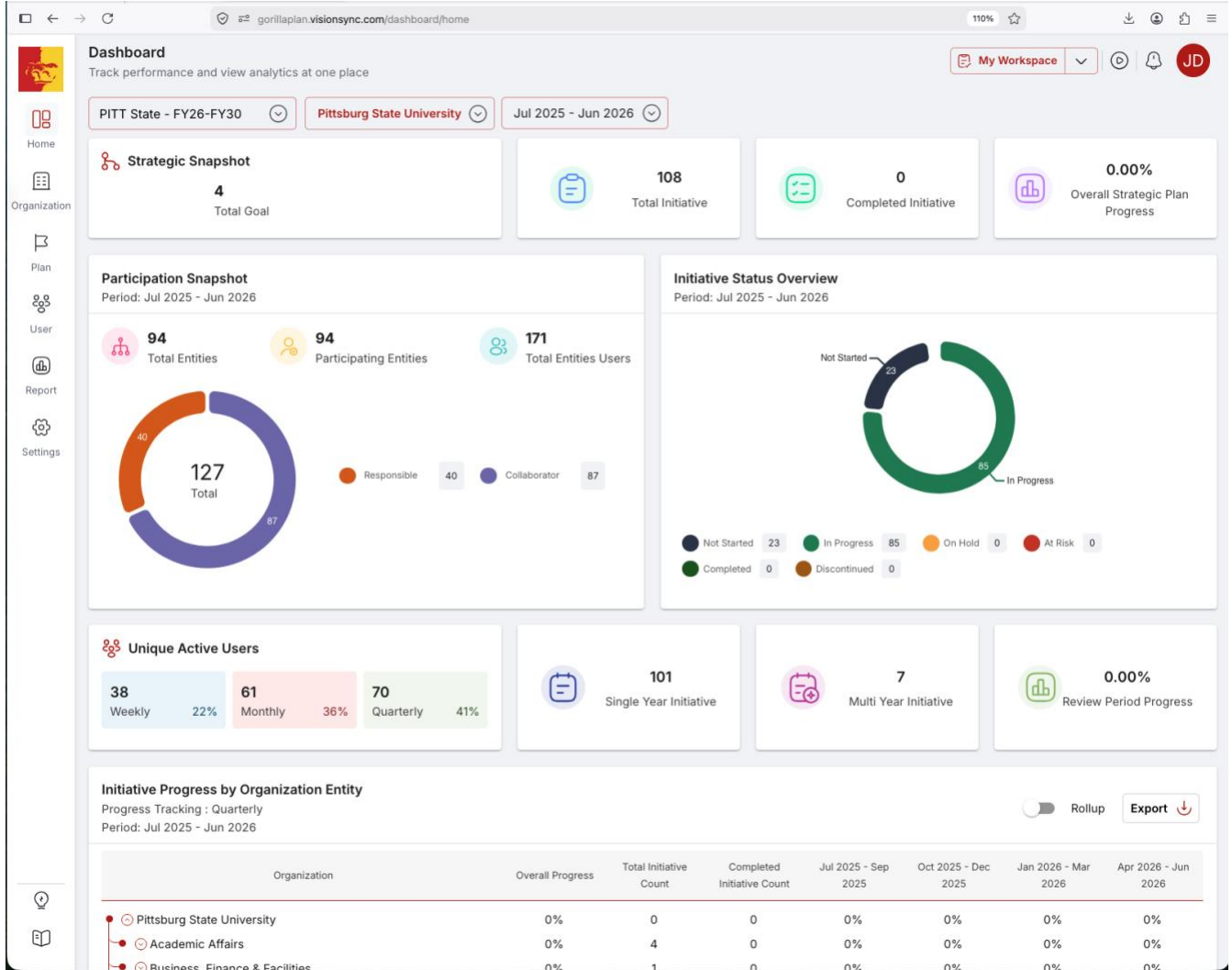
If you're not already logged into a SSO system, you'll be taken to the PITT plan sign-in page.

Click on the red button on the right that says "Sign In As SSO", then use your PSU credentials.



FYI – if you’re already logged into a SSO system, you’ll be taken directly into the PITT plan dashboard/home page from the GUS Portal.

The dashboard/home page looks like this:



That’s all you need to do – you’re now a user in PITT plan!

You have employee access and can view anything in the plan you’d like to see.



3. If you are assigned as either responsible for an initiative or a collaborator on an initiative, you will receive an email from VisionSync (the parent company) to view and accept the assignment.

Once you accept, you'll have further access to manage that initiative.

Initiative User Added [Summarize this email](#)

VisionSync <no-reply@visionsync.com>
To: Jaime Dalton

Thu 5/21/2026 4:17 PM



Initiative User Added

You have been successfully added to Initiative titled Continue discussions on our inclusive access model Day, where digital course materials are included as an additional course charge for a particular program as a collaborator role.

[View Initiative](#)

If the above button doesn't work, please manually copy and paste the following link into your web browser:
https://porillaplan.visionsync.com/dashboard/create-plan/5?edit_actionableItem=true&hierarchy_id=58&org_entity=147&plan_selected=892&plan_version_id=915&id=1991

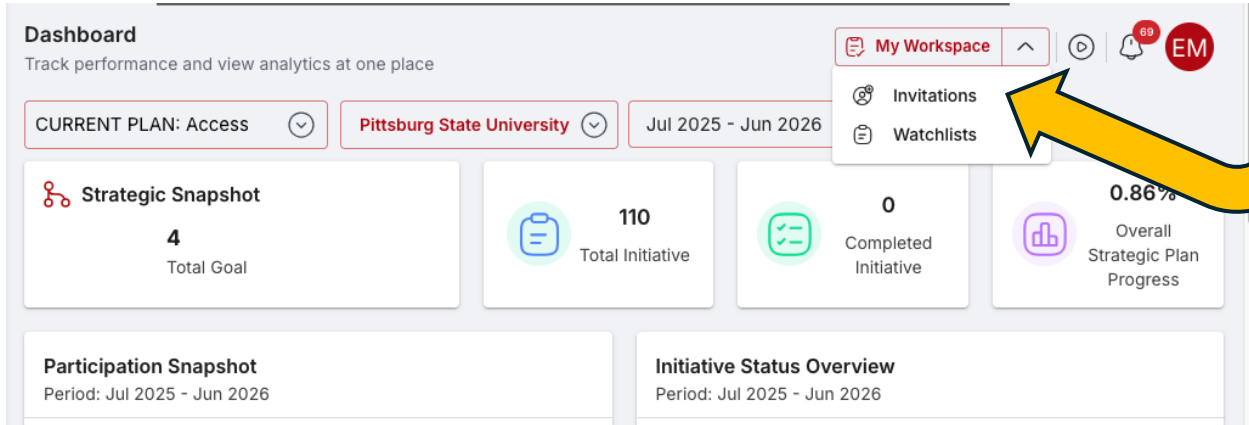
If you require assistance, kindly get in touch with VisionSync at no-reply@visionsync.com.

Copyright © 2026 StraightEdge Innovations, LLC. All rights reserved.

[Privacy Policy](#) [Terms & Conditions](#) [Help](#)

[Reply](#) [Forward](#)

You can also view and accept any initiative requests in PITT plan by clicking on the My Workspace dropdown and selecting Invitations. This will open a window that shows you the initiative(s) you've been invited to participate in and allow you to Accept or Decline right there.



If you'd ever like training on using PITT plan, just reach out to Jaime Dalton (jdalton@pittstate.edu) to set up a time to meet.