


A HISTORY OF PITT STATE'S ERP



PITTSTATE



Topic



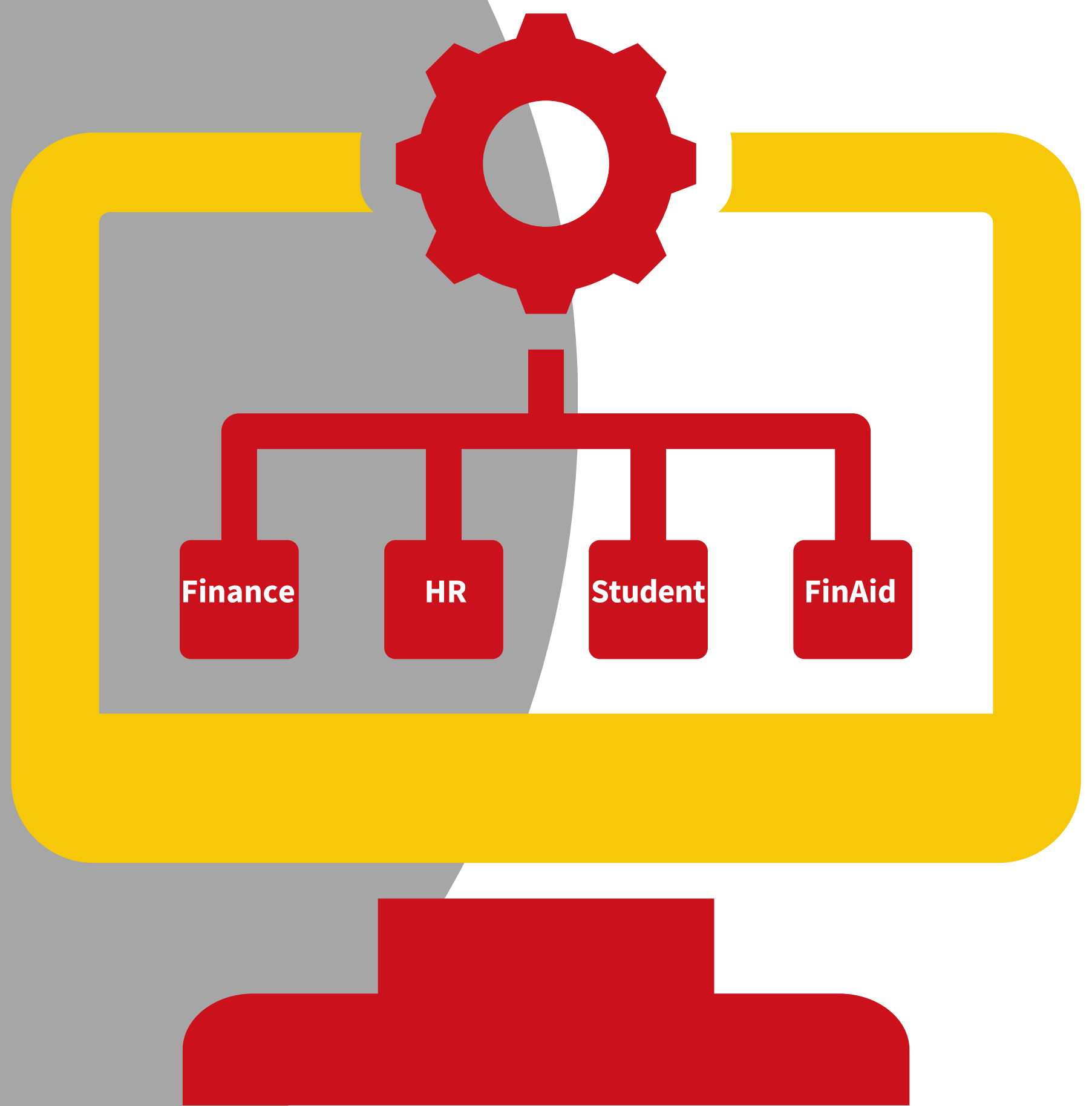
- *What is an ERP?*
- *Why do we need to move to a new ERP?*
- *Who is involved in the process?*
- *When is this all going to happen?*
- *What should campus expect?*
- *How can you help with this major change?*

PITTSTATE

WHAT?

IS AN ERP....

An Enterprise Resource Planning (ERP) system is a comprehensive software solution that helps colleges and universities manage and integrate their core administrative functions, such as finance, human resources, student information, and financial aid into a single, unified platform.



PITTSTATE

WHY?

DO WE NEED A NEW ERP....

Our current ERP (GUSClassic) has been in place for many years and served us very well. However, there are areas of concern, including:

- Age
- Reliability
- Security
- Fragility
- Reporting
- Decades old code
- Poor documentation
- Poor processes
- Lack of modern tools for recruitment, admissions, and retention.

BUT

BUT

WHY?

PITTSTATE

WHY?

ARE WE DOING THIS....

**Human
Resources**

Finance

Student

**Financial
Aid**

In
Process

A REMINDER:
THIS IS A 4 PART
PROJECT AND
WE ARE ON PART 4
(THE SIS)!

PITTSTATE

WHO?

IS INVOLVED....

A PSU search committee made up of campus stakeholders selected the product.

Subject Matter Experts (SMEs) from across campus meet weekly with our implementation partner, DriveStream, in preparation for the implementation, the training, and final go live!

Regular meetings with Oracle take place.

Processes, policies, integrations, and more are discussed, analyzed, and next steps determined.



PITTSTATE

WHO?
IS INVOLVED....



So who is DriveStream and how did they get involved?

- **DriveStream is an implementation partner that specializes in large and complex implementations.**
- **They meet regularly with the Oracle Cloud Education team and share our feedback and suggestions.**
- **They share Oracle information and roadmaps with PSU as we plan for the future.**
- **DriveStream is working with other OSM Early Adopters and brings us all together to share, learn, solve issues, etc as a team.**

PITTSTATE

WHO?
IS INVOLVED....

ORACLE

- **Oracle has been a great partner in the OSM journey**
- **Regular cadence meetings**
- **Campus visits**
- **Education opportunities**
- **Connecting PSU to other early adopters**

PITTSTATE

WHO?

IS INVOLVED....

The 8 Oracle Student Management Early Adopters:

- Dordt University - Sioux Center, IA - Enrollment: 2000
- Flagler College - St. Augustine, FL - Enrollment: 2700
- Navarro College - Main: Corsicana, TX - Enrollment: 7200
- Northwest Mississippi Community College - Senatobia, MS - Enrollment: 7000
- Pittsburg State University - Pittsburg KS - Enrollment: 5800
- Spring Arbor University - Spring Arbor, MI - Enrollment: 2400
- St. Olaf College - Northfield, MN - Enrollment: 3000
- Virginia Wesleyan University - Virginia Beach, VI - Enrollment: 1700



WHEN?

The first PSU Oracle Cloud implementations went live in 2017.

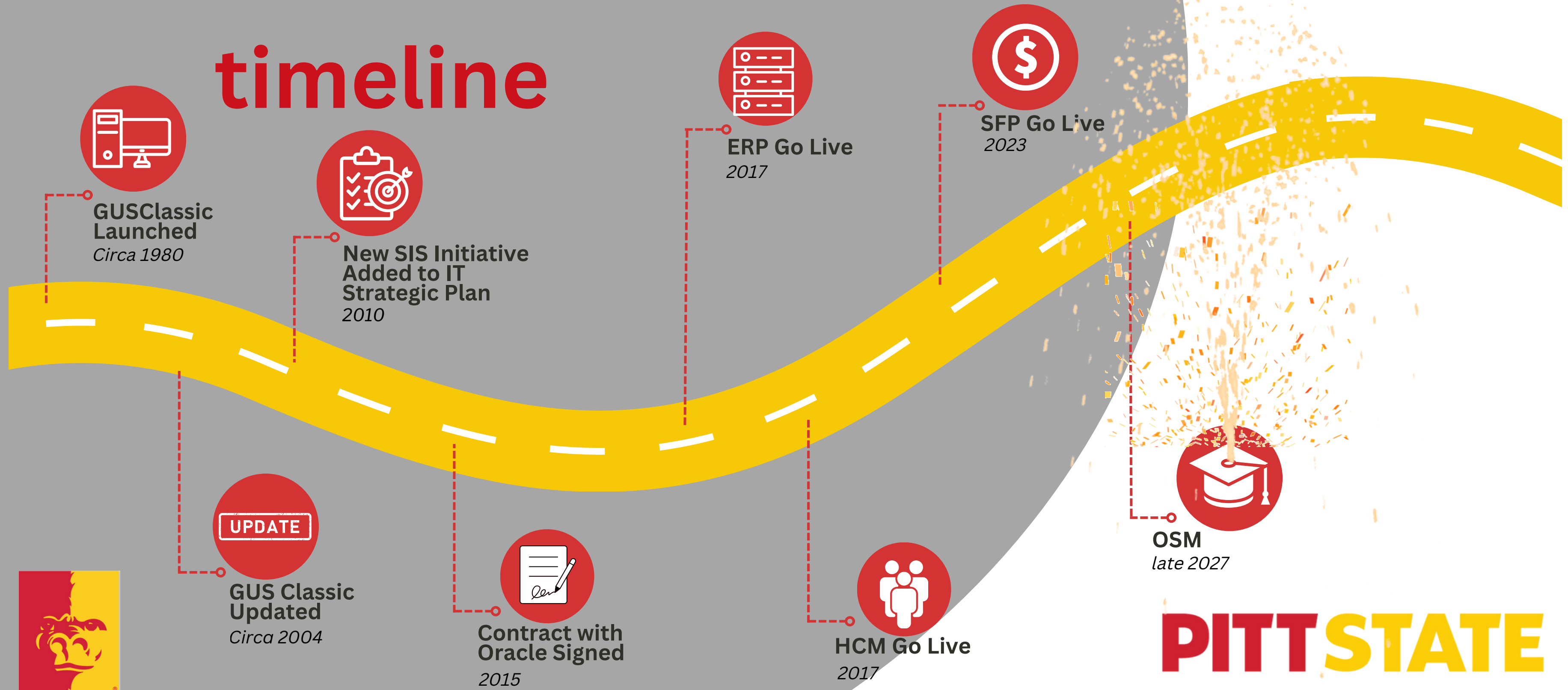
The final implementation (Student) is scheduled to go live in late 2027.



WHEN?

Let's review Pitt State's Journey....

timeline



WHAT?

What you can expect ahead:

- **Process Changes**
- **System Updates**
- **The Unexpected**
- **Successes & Failures**
- **Pros and Cons with the System**
- **Training Experiences**
- **PDs will likely change in some support areas**
- **Campus Cohort of support areas to prepare for updates/changes**



PITTSTATE

WHAT?

What are some of the benefits to a new system?

- Cloud-based leading to stability and up time
- Regular updates that comply with federal regulations
- Long term support through partnerships with other universities, DriveStream, and Oracle
- Modern reporting tools
- Efficient processes
- Best practices
- Intuitive user interface
- Mobile friendly
- Key integrations
- Increased IT Security
- And more!



HOW?

How can you help?

- Willing Hearts
- Trainers
- Feedback & Responsiveness
- Patience
- Flexibility
- Understanding
- Guidance/Experience



PITTSTATE

QUESTIONS? COMMENTS?

Reach out to:
studentsystem@pittstate.edu

PITTSTATE

Welcome
Pittsburg State
pittstategorillas.com

GORILLAS

1