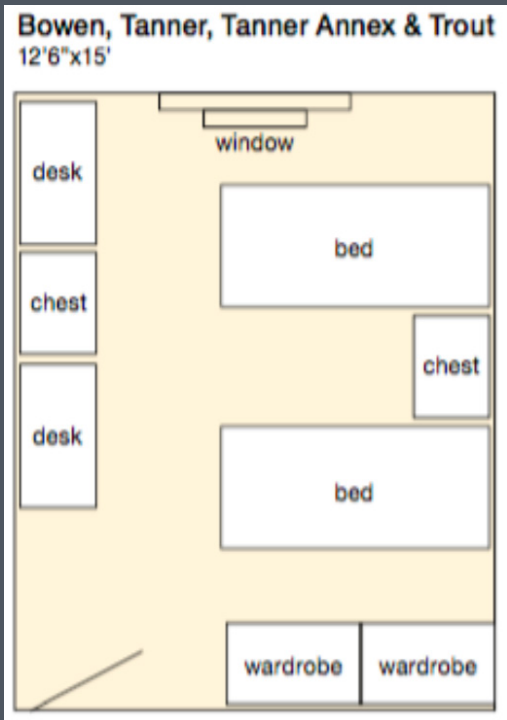
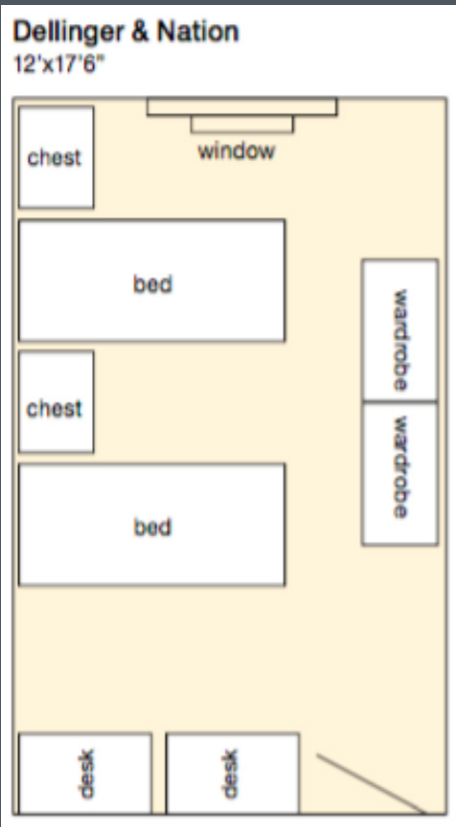


Traditional Housing

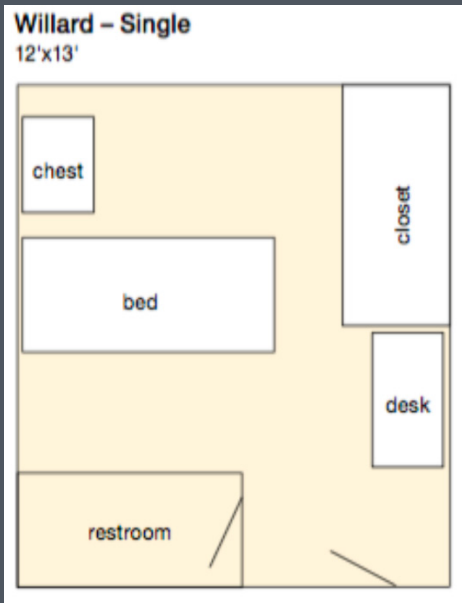
Description of traditional housing including dimensions of furniture



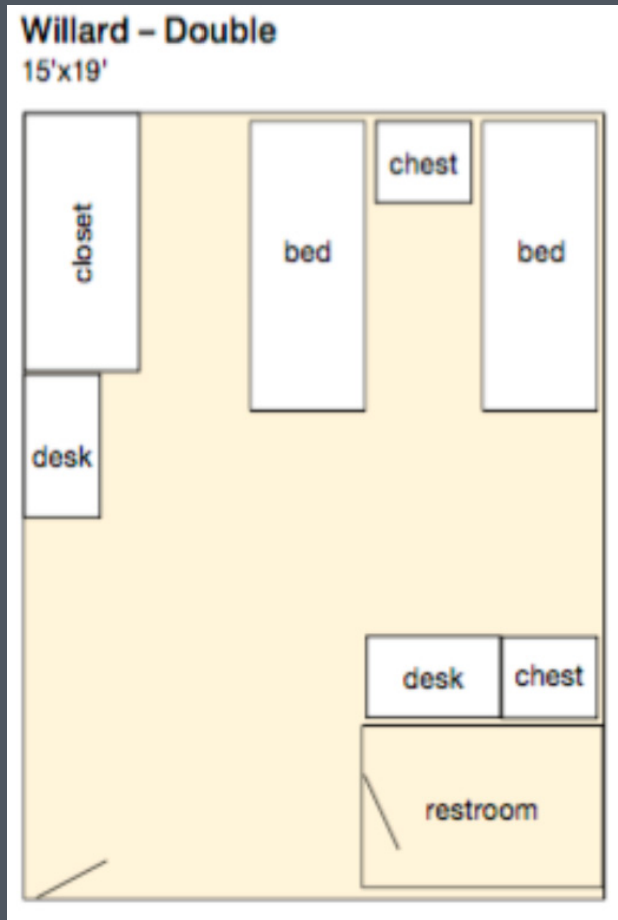
Description of above layout specifics



Description of above layout specifics



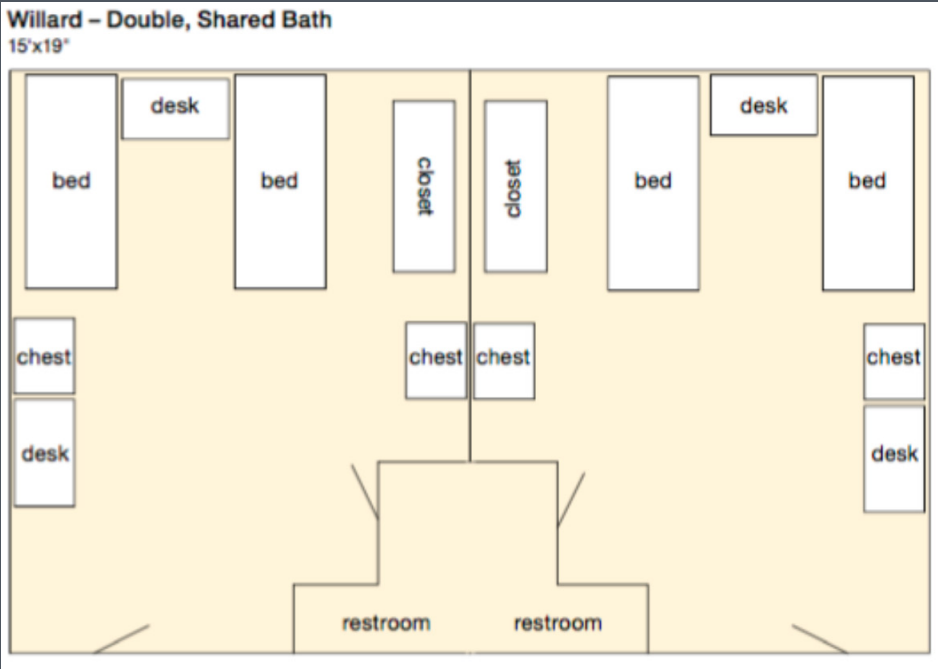
Description of above layout specifics



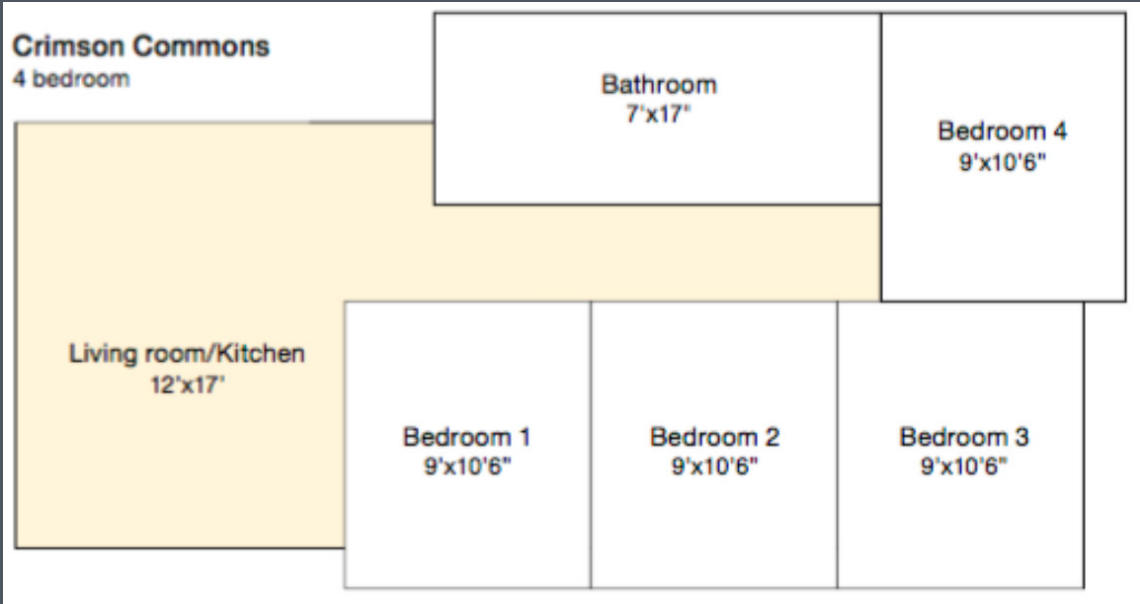
Description of above layout specifics

Suite-Style Housing

Description of willard shared bath double and commons including dimensions of furniture



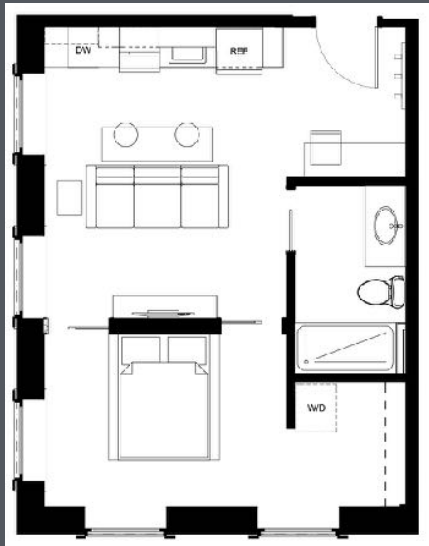
Description of willard shared bath double specifics



Description of crimson commons specifics

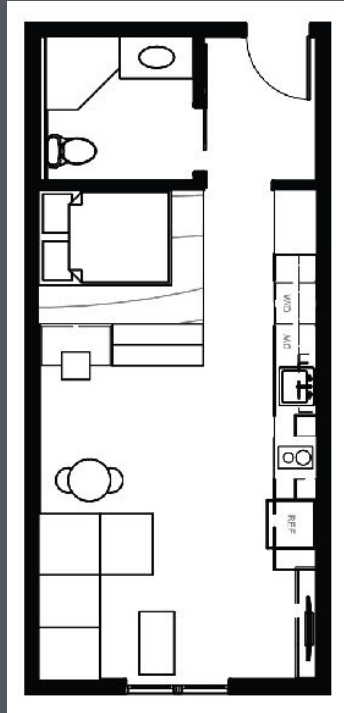
Block 22 Floor Plans

Block 22 is a downtown housing option for Pitt State students. [more description](#)



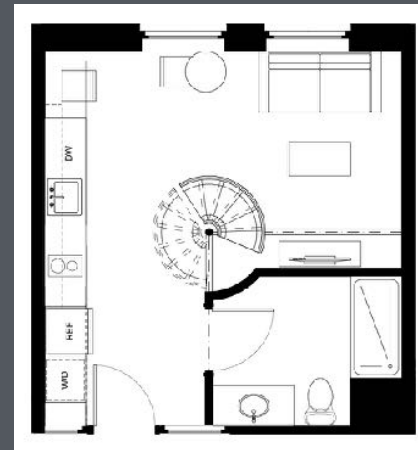
Suites

Generally larger units in the 400-500+ sq ft range that incorporate some type of division between living and sleeping (similar to a 1bdr) that are distinguished as premium based on size, style and location.



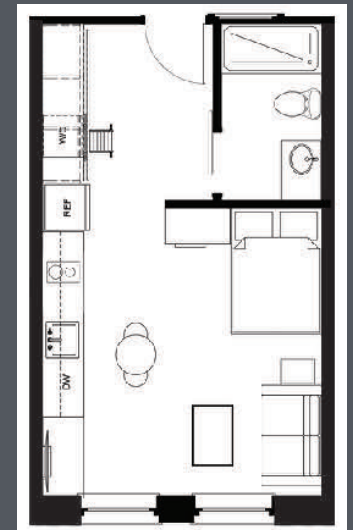
Flats

Midsized 'shotgun style' units, all in the 400 sq ft range, that feature partial height walls and a raised platform bed to create an open, urban feel.



Lofts

Select units with a studio size footprint that take advantage of 15 ft ceilings to provide a larger and completely unique living experience through a spiral staircase and lofted sleeping area.

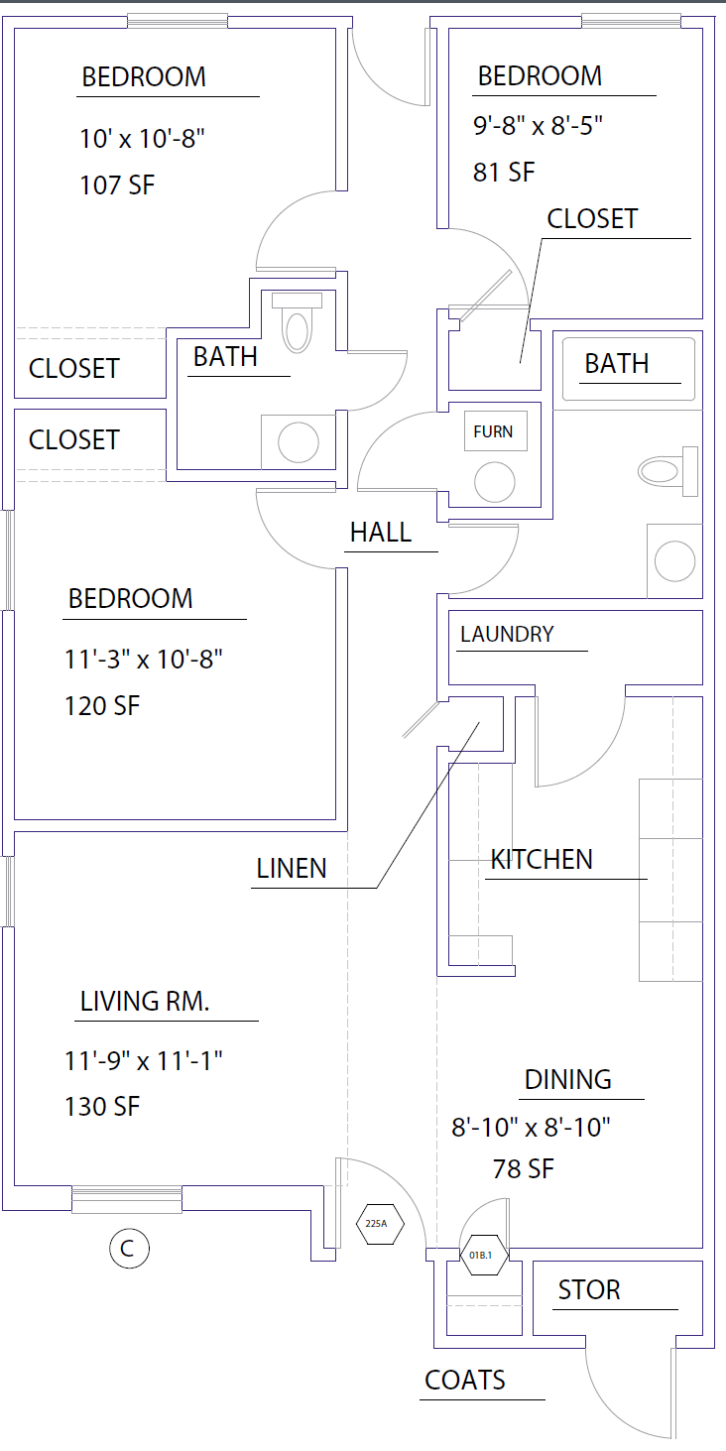


Studios

Traditional studio style units in the 300 sq ft range designed with smart features, such as movable ladders and murphy beds to create an efficient and enjoyable space.

Crimson Village (Family Housing)

more description of family housing options



Three Bedroom Apartment

1.5 Bath

683 Sq. Ft. (approx.)

All-new carpet and flooring (specify year of "new" otherwise just say carpet, cabinets, etc.)

All-new cabinets

All-new appliances:

Electric Range

Electric Oven

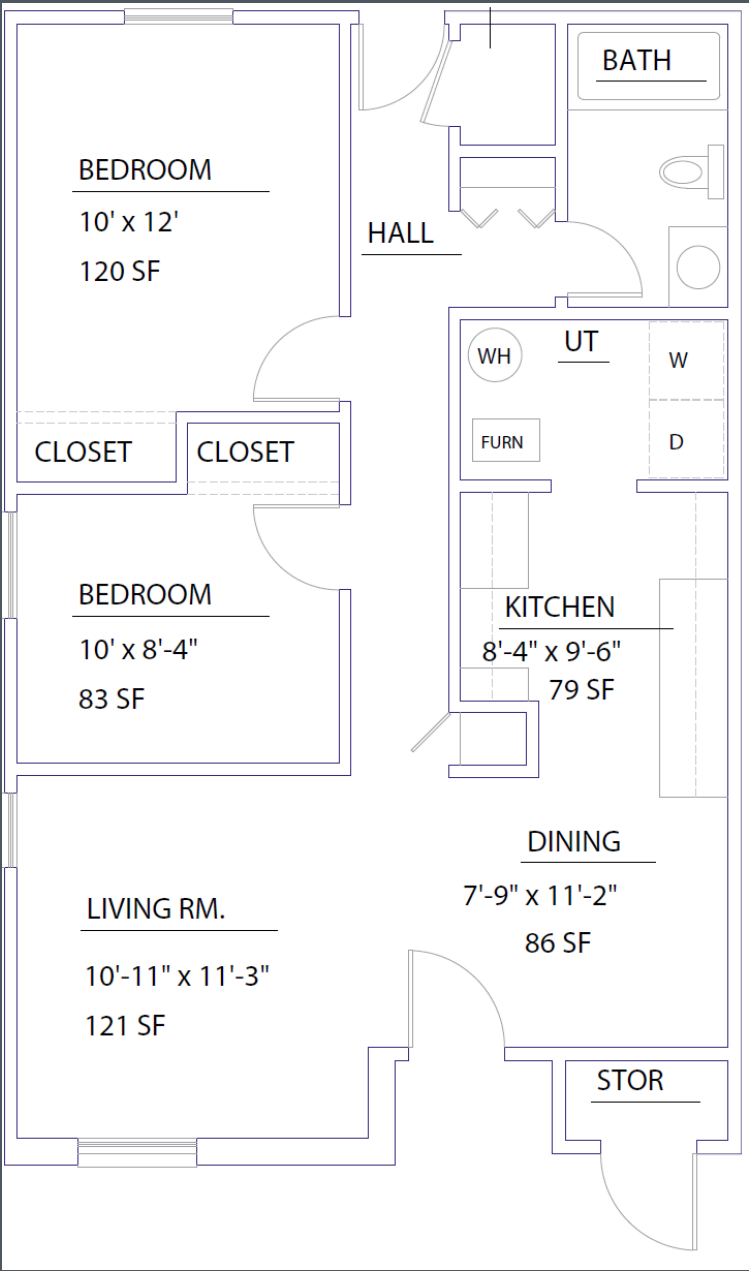
Refrigerator

Washer

Dryer

Crimson Village (Family Housing)

more description of family housing options



Two Bedroom Apartment

- 1 bath
- 510 Sq. Ft. (approx)
- All-new carpet and flooring
- All-new cabinets
- All-new appliances:
 - Electric Range
 - Electric Oven
 - Refrigerator
 - Washer