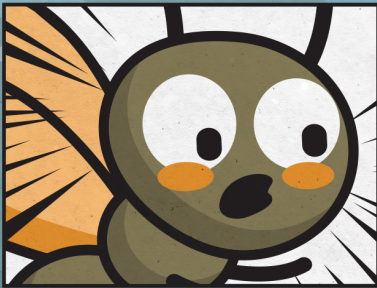
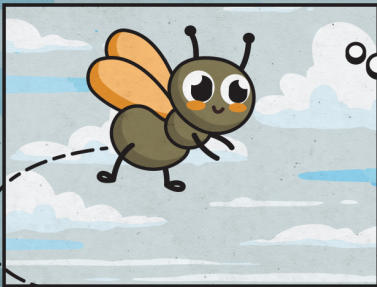


# THE WINDSHIELD & THE BUG

A WORKSHOP IMPROVISATION

CONCEIVED & DIRECTED BY CYNTHIA ALLAN



DEVELOPED BY THE  
COMM 625 ADVANCED  
PERFORMANCE  
ENSEMBLE

JUST WHEN YOU THINK  
YOU'RE INVINCIBLE...



## Letter From the Program Coordinator

Dr. Troy Comeau

Welcome to the 2020-2021 season of the Pittsburg State Theatre. As we move forward, one thing that the year has taught us is that change is inevitable. The beginning of this academic year the Department of Communication came together to celebrate the retirement of Dr. Cynthia Allan who served as Director of Theatre for over two decades.

We are very fortunate to have had Dr. Allan's vision and leadership over this program during those years. Thanks in part to that vision, we are pleased to announce in July that Dr. Megan Westhoff will be leading our program for years to come. I hope you join me in welcoming Dr. Westhoff into this role and continue to enjoy the unique and entertaining productions we have grown to love from Pittsburg State Theatre.

One immediate change that Dr. Westhoff has had to oversee is the new format of our "virtual productions" that were needed during the global pandemic. From an academic standpoint, I'm very proud of how our Theatre and Media Production students have come together to give our audiences the same quality experience they have come to expect.

This year's season opens on October 22-25 with the "virtual production" of *The Bacchae* directed by Mr. Linden Little. Conceived as a staged reading in a rock 'n' roll style, this reimagining envisions the god Dionysus as a pop star begging for the adoration of his hometown.

For our second show on December 3-6, we are pleased to have Dr. Cynthia Allan share her original "virtual production" of *The Windshield and The Bug*, which was postponed from its earlier scheduled date during the 2019-2020 season. This improvisation looks at a time in life when we figure out not everything can go our way.

Our third major production entitled *The Wolves* will be directed by Mr. Gil Cooper on February 25-28. This finalist for the 2017 Pulitzer Prize in Drama provides a quick, hilarious, and unflinching look at nine female "warriors" of a girls' indoor soccer team as they navigate struggles of adolescence.

Finally, Dr. Westhoff directs *Vanya and Sonia and Masha and Spike* from April 22-25. This 2013 Tony Award for Best Play follows a strained sibling relationship that is further complicated by a cleaning lady who predicts the future, a star-struck neighbor, and a disastrous costume party.

We appreciate your support of Pittsburg State Theatre and hope you enjoy this season's productions.

# Director Note

## Dr. Cynthia Allan

In 2018, I began conceptualizing an idea for an improvisational show for Pitt State Theatre. I created a number of these over my 20 years at the university, starting with *American Edit* in 2003, then *Macaroni and Jello*, *Brass Tacks*, *History of Laundry* (originally produced in 1998 in South Carolina), and *Grave Matters*. The process is both simple and demanding. I build the “skeleton” of the show and then, after a semester of teaching improvisational techniques, the advanced acting ensemble and I put the “meat on the bones.” I love working with students on these fast-paced and highly energetic shows.

For our April, 2020 production, I decided to focus on the amusing struggles of humans as we go from thinking everything is just fine to being blind-sided by reality. I decided to call it *The Windshield and The Bug*, after one of my favorite songs, *The Bug*, written by Mark Knopfler. Little did I know...when we shut down due to COVID, the ensemble was just about to transition from learning techniques to developing material. Everything came to a halt! Upon returning this fall, the restrictions on live performance meant we could not create the show as originally planned. But in spite of everything, the acting ensemble was dedicated to finding a solution. They had worked so hard for so long that the dream of showcasing their work just HAD to come to fruition!

After many zoom meetings we decided to team with the media production students and present an alternate production – a workshop-style film – of the original idea. Over two weeks, collaborating with other artists and PSU faculty, we built a set, recorded scenes, and “built” this final production -- all while maintaining strict COVID safety measures.

I am honored to work with the dedicated artists that brought this show to life. It demonstrates that no matter what, we will continue to practice our craft and do the best we can with the circumstances we’ve been given. Several students thanked me to sticking with them and making this production happen. But I say, thanks to my students for amazing me with their determination and resolve.

To the cast and crew,

*Break A Leg!*

Alpha Psi Omega - Theatre Honor Society  
*Alpha Epsilon Theta Chapter*

*President, Scott Ladish*

*Vice President, Joshua Ramsey*

*Secretary, Tayler Matthews*

*Business Manager, Kathryn Huffman*



Cooper acting out a scene



Scott sharing a memory





## Director of Theatre Dr. Megan Westhoff

While I am not new to Pitt State or the Theatre Program, I fill a big void as Dr. Cynthia Allan deservedly retired this past summer. While the COVID-19 pandemic has presented many challenges for the theatre community, I look forward to working with my fellow artists to navigate the changes that are happening in theatre to create the best possible experiences for our students. I have always known that theatre artists, scholars, students, and patrons are unique, but during this year, I have been continually reminded that this special community of people remains resilient, creative, and passionate. In whatever way we can continue to create theatre, on with the show!



From left to right: Josh, Kathryn, Miranda, and Lisa



Jenna preparing for a scene

# CAMPUS BOOKSTORE

Phone: 620-231-6747

Fax: 620-231-6115

1610 South Broadway

Suite A

Pittsburg, KS 66762

website: [pittsburg.textbookbrokers.com](http://pittsburg.textbookbrokers.com)

# The Windshield and The Bug

Director.....Cynthia Allan  
Set & Lighting Design.....Linden Little  
Costume & Prop Design.....Lisa Quinteros  
Video Producer & Editor.....Zane Hull  
Original Music & Lyrics.....Megan McCoy

## Cast

Payton Boswell	Cooper Dammrich*
Scott Ladish*	Miranda Madden
Taylor Matthews*	Josh Ramsey*
Jenna Russell	Noah Smith

## Scenes

### Director's Intro

Opening Song: In Five Years (Megan McCoy)

**Participation Trophy, Child Version**

**Participation Trophy, Adult Version**

**High School Book Club**

**Coronavirus Dating**

**First Job**

**Prairie Wetlands and Azalea Gardens Internship**

A Coronavirus Interlude: Resting Mask Face (Megan McCoy)

**Mothers and Daughters**

**Fathers and Sons**

**Senior Bugs (cameo appearances by Lisa Quinteros & Cynthia Allan)**

**Windshield Memories**

# Production Crew

Stage Manager.....Hunter Adamson  
Assistant Stage Manager.....Kathryn Huffman\*  
Set Construction.....Josh Ramsey\*, Jeff Ramsey,  
Zane Hull  
COVID-Compliance Officers.....Hunter Adamson, Kathryn Huffman\*  
Camera Operators.....Andrea Cortes, Wyatt Hull,  
Danielle Sisk  
Head Audio Technician.....Jon Eastman  
Audio Tech 1.....Brett Hale  
Audio Tech 2.....Andrew Grant  
Ad Video Producer.....Tanner Glenn

# Pitt State Theatre Staff

Production Assistant.....Cooper Dammrich\*  
PR/Advertising Manager.....Daisy Burns  
Graphic Artwork.....April Ahlders  
Production Photographer.....Gracelyn Haile

\* denotes membership in Alpha Psi Omega, national theatre honor society



The concept for *The Windshield and The Bug* was inspired by the lyrics from the following song famously covered by Dire Straits and Mary Chapin Carpenter

## **The Bug / lyrics by Mark Knopfler**

Well it's a strange old game - you learn it slow  
One step forward and it's back to go  
You're standing on the throttle  
You're standing on the brakes  
In the groove 'til you make a mistake

Chorus:

**Sometimes you're the windshield  
Sometimes you're the bug  
Sometimes it all comes together baby  
Sometimes you're a fool in love  
Sometimes you're the louisville slugger  
Sometimes you're the ball  
Sometimes it all comes together baby  
Sometimes you're going lose it all**

You gotta know happy - you gotta know glad  
Because you're gonna know lonely  
And you're gonna know bad  
When you're rippin' and a ridin'  
And you're coming on strong  
You start slippin' and slidin'  
And it all goes wrong because

**(Chorus)**

One day you got the glory  
One day you got none  
One day you're a diamond  
And then you're a stone  
Everything can change  
In the blink of an eye  
So let the good times roll  
Before we say goodbye, because

**(Chorus)**

# Musical Note

Megan McCoy

Composing music for me always starts with a conversation. I've known Dr. Cynthia Allan for the better part of a decade now and this is the fourth show I've been fortunate to collaborate on with her. Each project has been very unique in the conclusion yet the inspirations were immediate for me after getting the chance to sit and chat with this deeply clever director about her various visions. I think she and I have a natural artistic understanding, which has led to some very expressive and exploratory music I could never dream of making under other circumstances. For this show, I simply wrote what I thought would make her laugh knowingly, and laugh she did, so I am very excited to share this music. Thank you.





Taylor and Payton playing a game

The logo for Ridings Healthcare features the word "Ridings" in a purple, sans-serif font. To its right is a green cross symbol. Below "Ridings" is a purple line-art graphic of a stethoscope with a heart. To the right of the cross is the word "Healthcare" in a purple, sans-serif font, and below it is the tagline "Your Direct Care" in a green, cursive font. At the bottom, the text "Patient Memberships Available" is in a bold, purple, sans-serif font. Below that, the phone number "Phone:620-704-5587" and the website "www.ridingshealthcare.com" are listed in a purple, sans-serif font.

**MINERS  
+  
MONROE**  
ESTD 2018

DENIM  
TEES  
APOTHECARY



**QUALITY MEN'S GOODS**

214 S. Broadway | Pittsburg, KS | (620) 704-4949



Noah and Josh in a scene



**THE CHOP SHOP**  
EST. 2020

1608 B S. Broadway     The Chop Shop     620.506.8259

# A Special Thanks

We send a special and sincere thank you to everyone who provided invaluable services, materials, and support during this new season. Our apologies if anyone is inadvertently omitted.

## **Joe Firman and the BFCA staff**

**Jon Eastman**

**Shelby White**

**Troy Comeau**

**Kristi Geier**

**Debbi Fischer**

**And forever in our hearts, Mildred Cohan**



Lisa and Hunter positioning props