

eurydice

SARAH RUHL





A NOTE FROM THE CHAIR

Dr. Cynthia Allan

Department of Communication

Welcome to the 2014-2015 season of the Pittsburg State Theatre! This is a smaller production season than usual due to the major move into the Bicknell Family Center for the Arts complex. You can imagine what all the years of tools, equipment, costumes, lumber racks, etc. from our Whitesitt shop will be like to move across campus. Fortunately, that effort, led by Megan Westhoff and Lisa Quinteros, will be a successful one, I'm sure. This transition year for us is one of great excitement and anticipation for the opportunity to further develop and grow our theatre program.

It also gives me great pleasure to take this opportunity to thank the alumni of the Pitt State theatre program. The excellent productions created by scores of previous students are, in part, what helped cement the support and belief in the theatre program and the need for a real performing arts center. Whether you currently work in the theatre profession or not, your dedication to Pitt State Theatre while a student is appreciated and respected. You are the legacy of this program and you set the bar high. We honor you and thank you.

The 2014/2015 season begins October 23-25 with *You Can't Take It With You*, by Moss Hart and George S. Kaufman and directed by yours truly, Cynthia Allan. This raucous comedy, set in the days of the Depression, centers on the Sycamore family and their individualistic approach to life. It is the most famous American comedy in the canon, and is revived on Broadway on a regular basis, including a new production opening in 2015 with James Earl Jones. Come out to this entertaining event. It is the last time Pitt State Theatre will be staging a regular season play at Memorial Auditorium, and we are sorry that we are unable to take our Memorial theatre family with us. We are sure there will be opportunities for other collaborations in the future.

Then, on December 4-5, we continue our tradition of Theatre Unplugged with the student-directed one-act plays produced in the Studio Theatre on Joplin Street.

In the spring of 2015, Cynthia Allan, director, along with Gil Cooper and Megan Westhoff joining the cast, Linden Little as designer, and the original music of Megan McCoy, will present Sarah Ruhl's *Eurydice* from February 26 – March 1. This hauntingly beautiful piece is a contemporary re-telling of the Orpheus myth from the perspective of Eurydice, who, in Ruhl's version, descends into the Underworld to find her father. Ruhl wrote the play after her father passed away in order to have "one more conversation" with him. Touching, funny, and visually powerful, this award-winning play is a rightful introduction to the new theatre space in the Bicknell Family Center. We hope you join us.

I am sure the faculty, staff, and students of the Department of Communication and PSU Theatre join me in expressing our gratitude for your support and our sincere hopes that you enjoy the 2014/2015 season.

Regards,
Dr. Cynthia Allan



Lindsey Lockhart (Eurydice) and Gil Cooper (Her Father).



Paradise Mall Antiques & Collectibles

105 South Broadway
Pittsburg, Kansas 66762

620-232-6956

Open 7 days a week

Voted Number One in Crawford County
Michael and Ramona Swartz

"Eurydice says to her father, 'There was something I always wanted to ask you. A story – or someone's name – I forget.' Her father's response: 'Don't worry. You'll remember.' There's plenty of time.' Sarah Ruhl's poignant words are a gentle reminder to all of us to be present in the moment, appreciate the people around us and take each instant in our lives to communicate the words we want to say because we only have a limited amount of time." - Megan Westhoff (Little

Stone)

DIRECTOR'S NOTES

Dr. Cynthia Allan



I think Sarah Ruhl is one of the most brilliant playwrights of the 21st century. Her version of Eurydice blends classic and contemporary storytelling in such a way that it can't help but serve as a fitting metaphor for what university theater brings to the campus and community – traditional tales told in new voices; our communal unconscious brought to modern, abstracted light.

There is another reason I chose this play. Like Ruhl, I, too, lost a parent at a young age and I, too, understand the depth of that loss, the yearning to have one more conversation, one more hug, one more story. So to honor Ruhl, my past, my present, the program here at Pitt State that I so dearly love, and all those who come to hear and share our stories, I present Eurydice.

Besides, how can you not love the chorus of stones? Those brats. It was like being in the back seat of the Rambler station wagon with my siblings on long family vacations through the southwest. There is always laughter hidden inside pain. And vice versa.

To the cast and crew,

Break a leg!

Sincerely,

President Taylor Elliott
Vice President Carl "CeeJay" Bachus
Business Manager Bobbi Jo Smith
Secretary Brianna "Breezi" Hancock

ALPHA PSI OMEGA

Theatre Honor Society - Alpha Theta Epsilon Chapter
On Twitter at @APOatPSU or email psualphapsi@gmail.com

Pitt State Theatre
thanks Memorial Auditorium & all their staff
for the many years of collaboration & support!



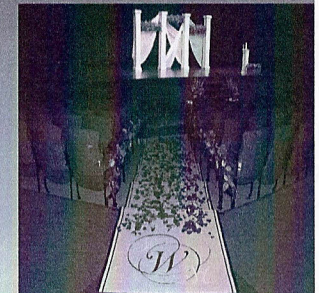
*Memorial Auditorium
and Convention Center*

503 N Pine St Pittsburg Ks, 66762

Meetings, Receptions, & Weddings
reception packages available

Contact us

620-231-7827 or www.MemorialAuditorium.org



Keep up to date on our future shows

 **pittsburg
community
theatre**

www.PittsburgCommunityTheatre.com



Midwest Regional Ballet

Dracula



April 17-19, 2015

The Nutcracker
With

Southeast Kansas Symphony



November 20-22, 2015

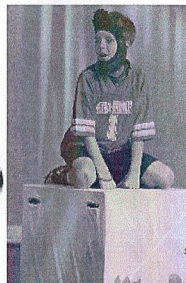
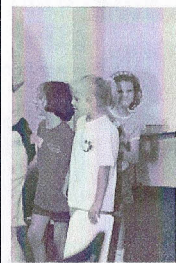
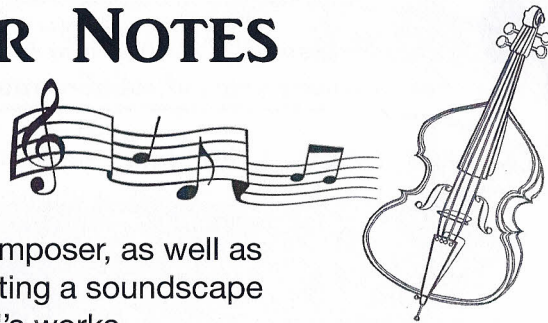
www.MemorialAuditorium.org

COMPOSER NOTES

Megan McCoy

This is my second opportunity to work with Dr. Allan as a composer, as well as my second time creating a soundscape for one of Sarah Ruhl's works.

Composing the music for Eurydice was a wonderfully humbling experience, filled with inspiration and surrender. Performing live music for a play that is not a musical is somewhat like navigating uncharted waters. The path is unwritten, yet it is illuminated by possibilities. I want to thank Dr. Allan for entrusting me to evoke the spirit of the work, and to become a veritable member of the cast through sound.



PCT's Jr. Starz is open to any child (ages 6-12) interested in theatre, regardless of experience.

Contact Memorial Auditorium and Convention Center at 620-231-7827 for registration forms.

Registration forms will be available in May.

Jr. Starz Workshop Dates
June 8th-19th from 1p-5p

Production Date
June 19th at 7:00pm



Loree's
BRIDAL & FORMAL
524 N. BROADWAY
PITTSBURG, KANSAS 66762
620-235-0286 FAX 620-235-0841
LOREESBRIDALFORMAL@YAHOO.COM

"I heard your name inside the rain--somewhere between the drops'. The play does a beautiful job of exploring how moments of memory define our love." - Gil Cooper (Eurydice's father)

UNIVERSITY BANK
"Locally connected, personally committed"

1200 S. Broadway Pittsburg, KS 620-231-4200	501 E. Washington Arma, KS 620-347-4802	1001 Ste. A K.66 Hwy Galena, KS 620-783-1319
---	---	--

"My favorite thing about this show is how it is so intricate and poetic that it's almost impossible not to be emotionally moved while watching it." - Megan Reed (Loud Stone)

Pittsburg State University Career Services
620-235-4140 www.pittstate.edu/careers

Employers, students, and alumni

Find the perfect employee...
or find the perfect job!

facebook
twitter
LinkedIn

GORILLAS4HIRE

EURYDICE

by Sarah Ruhl



Presented by special arrangement with SAMUEL FRENCH INC.

Directed by Cynthia Allan*
Set, Lighting, and Sound Design by Linden Little
Costume Design by Lisa Quinteros
Original Music Composed by Megan McCoy

CAST

Eurydice.....Lindsey Lockhart
Her FatherGil Cooper
Orpheus..... Alexander Warstler
A Nasty Interesting Man/Lord of the Underworld..... Logan Qualls*

A Chorus of Stones

Big StoneTaylor Patterson-Elliott*
Little Stone..... Megan Westhoff*
Loud StoneMegan Reed*

With original music provided by

The "Rock" Band

Megan McCoy, violin
Kolby Williams, viola
Mavi Goydy, cello

Eurydice is performance with no intermission

This play was originally produced by Madison Repertory Theatre, Madison, Wisconsin, August 29, 2003. Richard Corley, Artistic Director, Tony Forman, Managing Director.
And subsequently produced by Berkeley Repertory Theatre in 2004. Tony Taccone, Artistic Director, Susan Medak, Managing Director.
And Yale Repertory Theatre, James Bundy, Artistic Director, Victoria Nolan, Managing Director.
"Produced by Second Stage Theatre, New York, 2007"
Carole Rothman: Artistic Director
EURYDICE is produced by special arrangement with Bruce Ostler, BRET ADAMS, LTD., 448 West 44th Street, New York, NY 10036

No flash photography or video recording is permitted during the performance. Please make sure ALL cell phones are turned off. For the comfort of other audience members, please take crying or fussy children to the lobby.

Production Staff

DirectorCynthia Allan*
Stage Manager Ila Phelps
Assistant Stage Manager Jocelyn Donegan
Technical Director Linden Little
Shop Foreman..... Catie Almond*
Hair Design.....Danielle Pollard
Make-up and HairCatherine Duncan, Megan Reed*
PropertiesJocelyn Donegan, Megan Westhoff*, Sarah Base
Running Crew..... Olivia Ellison*
Light Board OperatorRyan Urban
Sound Board OperatorJacob Titus
Set Construction & Painting..Olivia Ellison*, Logan Qualls*, Megan Reed*, Taylor Patterson-Elliott*, Hope Gardner, Ila Phelps
Costume Construction..Barbara Davis, Ada Zhang, Hope Gardner

Theatre Staff

PR/Advertising Manager.....Ali Smith
Poster/Program Design April Huninghake
Production Photographer.....McKenna Hightower

Special and Sincere Thanks to:

Jason Huffman
Chuck Boyles
Memorial Auditorium
Alan Ross
Mimi Little
Pittsburg Community Theatre
Michelle Westhoff,
Debbi Fischer
Mildred Cohan

**Indicates member of Alpha Psi Omega, Theatre Honor Society*

SET DESIGN NOTES

Linden Little

Since memory operates as a central theme for our production, I turned to memories of my Grandmothers for guidance. Cecilia Schallo and Josephine Little would both agree that an inaugural event requires fine china, polished silver, and crisp linens. This design features the theatrical equivalent with rich glass mosaic tiles, vivid metallic paint hues, and eco-friendly surface treatments from Studio City, California. The execution of the design was informed by the memory of PSU graduates Nancy Tinsley, Robert Tindel, and former PSU faculty Dr. Cary Clasz. Now let us commence a new era of memory making here in the Miller Theater!



COSTUME DESIGN NOTES

Lisa Quinteros

The Costumes for Eurydice: Pattern...1950's, Texture, 1930's, Repetitive, Numbers, Icons - Thematic Touches...Time, Color, Greek Influence, Boy Bands, Childhood, Time Era, Written Word - Fluid and Stone....Hard Rocks, Stretch, Running Water, Chiffon, Metal - Hard and Soft...Laughter, Tears, Sounds Muffled, Sounds Blared, Drips and Drops and Paint Swished... All these Things, all these Thoughts, poured into a Funnel, mixed well...Flow through and Exit as Thread which is then Sewn into Memory.

WINE • SPIRITS • IMPORT BEERS • KEGS

Centennial Liquor, LLC.

2308 S. Rouse
Pittsburg, Ks 66762
620-232-3700

Open Sunday
12:00-8:00 p.m.

Owners:
Gay & Kent Grisham

"My favorite part of the play is when Father makes Eurydice a room out of string, sheltering her as best as he can. I feel so honored to be a part of such a beautiful production." - Taylor Patterson-Elliott (Big Stone)

pittsburg community theatre

Yours, Anne

The story of Anne Frank is now a haunting and powerful synopsis. While remaining faithful to its deservedly acclaimed source material, the timeless story is enhanced by a most moving and lyrical score.

March 27 & 28, 7:30 pm
March 29th, 2:00pm

for tickets: 620-231-7827 or www.MemorialAuditorium.org

CAMPUS BOOKSTORE

Rent/Buy Now
PAY LATER

Phone: 620-231-6747

Fax: 620-231-6115

Email: psubookreserves@yahoo.com

1610 South Broadway
Suite A
Pittsburg, KS 66762

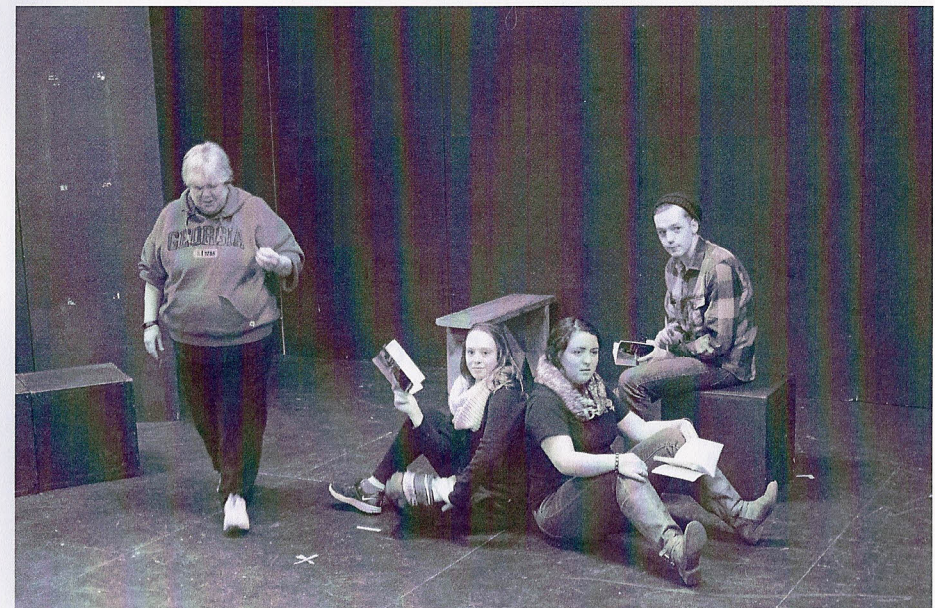
CRIMSON VILLAS
AT ROUSE CROSSING

Proudly supports the
Pittsburg State University
Theater Department

**MAKE
YOURSELF
AT HOME**

1904 South Rouse, Pittsburg, Kansas 66762
Phone: 620-875-3730 f Fax: 620-231-0331
E-mail: www.crimsonvillas.com

"I wanna reminisce'. The reason I enjoy this scene, this quote, in particular is because we all go through some loss. More importantly, we try to bargain for what we can no longer have." - Alexander Warstler (Orpheus)



Dr. Cynthia Allan (Director), Megan Reed (Loud Stone), Taylor Elliot (Big Stone), and Logan Qualls (An Interesting Nasty Man)



**People and
Community
Are What Count**

Commitment to our customers has been and will always be top priority. Call, click, or come by to discover how we combine products and people to not only meet, but exceed your local banking expectations.

 **Commerce Bank**
Member FDIC

commercebank.com / 620.231.8400

Sweet Designs Cakery



Birthday Cakes
3D/Sculpted
Wedding
Groom's
Showers
Anniversaries

Walk-in
Bakery Items
Ice Cream
Bottled Soda
Cake Bites

www.SweetDesignsCakery.com • www.SweetDesignsCakery.blogspot.com
620.231.CAKE | 311 N. Broadway | Pittsburg, KS 66762

"As an actor, this play has challenged me to take the role of Eurydice and develop it into an avenue for Ruhl's voice to be heard; it is an exciting task that I've learned takes a lot of patience, teamwork, and humility." - Lindsey Lockhart (Eurydice)

"I feel incredibly honored to be part of this cast, and I know this production would have never been possible without the phenomenal talent and dedication PSU faculty, students, and members of the Pittsburg community have demonstrated over the past 30 years" - Logan Qualls (The Nasty Interesting Man/Lord of the Underworld)

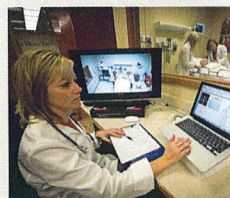
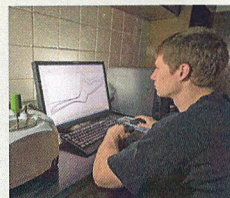


2015 Spring Performances

Thursday, March 5.....	PSU Apple Day Ceremony
Friday, March 6	41st Annual Jazz Festival
Saturday, March 7	String Madness Concert
Sunday, March 8.....	PSU Choirs Spring Concert
Thursday, March 12.....	A Tribute to America and the Arts: Gene Bicknell in Concert
Wednesday, March 25.....	World famous illusionist, Reza
Friday, March 27	SEK Symphony Young People's Concert
Tuesday, March 31.....	Steinway Society Concert, featuring Reena Berger Natenberg
Wednesday, April 1	The Well Reds
Tuesday, April 7	Steinway Society Concert David Osborne, "Pianist to the Presidents"
Thursday, April 9.....	Wind Ensemble Concert
Sunday, April 12.....	Treble Clef Club of Pittsburg Concert
Monday, April 13	Performing Arts and Lecture Series presents STOMP
Wednesday, April 15.....	Air Force Big Band Jazz "The Falconaires"
Sunday, April 19.....	312th Army Band in Concert
Tuesday, April 21.....	PSU Jazz Ensembles present PSU & Jazz in Retrospective
Wednesday, April 22	Women in Government Lecture Series presents First Lady Laura Bush
Sunday, April 26.....	PSU Choirs/SEK Symphony, Works of Handel and Dvorak
Thursday, April 30.....	Four States Honor Band Festival Concert

For performance times and ticket information go to
BicknellCenter.com

For tickets call 620-235-4796.



Pittsburg State University

Graduate School

www.pittstate.edu/graduate

**Offering over 50 programs on-campus
and 14 ONLINE Programs!**

Including

- Bachelor Completion Workforce Development
- MS Educational Leadership
- MS Educational Technology
- MS Engineering Technology
- MS Human Resource Development
- MS Teaching ESOL
- MA Teaching Special Education
- And many more!

Proud Supporter of

PSU Theatre Productions