



MINUTES

Kelce College Closing Spring Meeting - Monday May 12, 2025

Faculty Awards Reception at 2:00 p.m. in Kelce #121

Meeting starts at 2:30 p.m. in Kelce #224

Present: Jamie Brooksher, Mark Johnson, Gail Yarick, Will Huffman, Dezhi Jiang, Stephan Zornes, Mary Jo Goedeke, Kay Kim, Young Nae, Dwight Strong, David Sikolia, Wei Sha, Chandler Davidson, Jenni Hall, Holly Kent, Melissa Weed, Irene Robinson, Kaitlynn Lee, Mimi Morrison, Josh Curran, Kristen Maceli, Mary Wachter, Mary Judene Nance, Shipra Paul, Lisa Paterni, Jennifer Pursley, Michael Davidsson, Judy Smetana, Phillip Frank, Lynn Murray, Paul Grimes, Alexander Binder, Chelsey Decker, David Weaver, Connie Shum

Absent: Jae Choi, Linden Dalecki, Anil Lal, Sang-Heui Lee, David O'Bryan, Larry Woodward

- I. Welcome and Opening Remarks – Paul Grimes
 - a. Discussed handout of 2025 Carnegie Classifications
 - i. Pitt State is now ranked among Research Colleges & Universities
 - ii. Classified as a Higher Access and Higher Earnings University
 - iii. Calling Opportunity Colleges & Universities
 - iv. Great honor for Pitt State – efforts of everyone reflected in the new classifications
- II. Faculty Promotions Recognition
 - a. Wei Sha – promotion to Professor, Data Science and Information Systems
 - b. Mary Judene Nance – promotion to Associate Instructional Professor of Marketing
- III. New Building Updates
 - a. Review of renderings and timeline; slideshow – Dr. Grimes reviewed exterior and interior renderings; sample renderings distributed in meeting packet; will prepare poster-sized copies for displays in current building and for events over the next year
 - b. Development Update and Office Naming Opportunity – Jenni Hall – all faculty have opportunity to name a faculty office at ½ price (\$5,000 instead of \$10,000) through the end of June; payroll deduction is an option (spread over 3 years); contact Jenni with questions; Dr. Grimes and Jenni are visiting with past donors to discuss their named spaces in the new building; additional naming opportunities are also still available
 - c. Questions and discussion – move-in date is summer 2026 (3rd week in July); discussed that plans will be made on how faculty will choose their new office location in the building
- IV. AACSB News and Strategic Planning Update
 - a. AACSB Accreditation Cycles: review periods for all currently accredited schools were extended from five to six years; our next visit will be in AY 2029-2030; all accreditation policies and procedures must be updated to reflect this change; KLT will hold retreat to revise documents for consideration and approval by faculty at next fall's opening meeting – will call on Program Coordinators to contribute to revisions when necessary
 - b. Pitt State's Gorilla Plan: new fiscal year begins July 1; initiatives adopted last fall will be entered into the system and previous initiatives not yet completed will be carried forward; annotated plan will be distributed after end of this current quarter with this year's results and outcomes

V. Faculty and Staff Appointments during AY 24/25

- a. HRD faculty transfers completed; Mark Johnson, Judy Smetana, and Krissy Lewis
- b. Assistant Professor of Economics; Braxton Gately
- c. Assistant Professor of Business Law; Jamie Brooksher
- d. Assistant Instructional Professor of Accounting and Finance; Lakshmi Chennupati
- e. Assistant Instructional Professor of Marketing; Chandler Davidson
- f. Assistant Dean for Graduate Business Programs; Chelsey Decker
- g. Coordinator for Assessment and Accreditation; Josh Curran
- h. Coordinator for Entrepreneurship Programs (with RED); Jane Talkington
- i. Searches not completed:
 - 1. Data Analyst (with RED)
 - 2. Director of Forecasting (with RED)
- j. Searches/Reappointments underway
 - 1. Assistant Professor of Marketing
 - 2. Visiting Assistant Professor of Economics; D.J. Jiang

VI. College Updates and Reports

- a. HRD Transition; effective with the first of the fiscal year, July 1st – will need to update college documents to reflect this transition (Faculty Bylaws, etc.)
- b. Assurance of Learning (AOL)
 - i. Undergraduate – Jennifer Pursley
 - ii. Graduate – Lisa Paterni

Jennifer and Lisa provided a preview of the AOL workshop to be held at 10:00 a.m. on Monday in the OSC; encouraged all faculty to assist in developing and implementing our new AOL program; the AOL process must be faculty-driven; to date, we have completed Step 1: Develop Competency Goals and Step 2: Develop Objectives; next up is Step 3: Develop the Measures – will work on this on Monday; there are 7 additional steps which will “close the loop”; Jennifer and Lisa provided a review of this accreditation cycle’s approved goals and objectives with edits; they also reviewed the goals for the MBA & MPAcc degree programs; more will be discussed at the workshop on Monday

- c. Curriculum Updates – New programs
 - i. Human Resource Development; BBA and MSHRD (online-only for now); approval completed; will appear in the next University Catalog
 - ii. Supply Chain Management and Industrial Distribution (with CCOT); final approval expected at KBOR this month; will appear in the next University Catalog
 - iii. Secondary Business Education Certificates for Business Studies BBA; first time in several decades that we will offer a path for business students to pursue a teaching licensure; will appear in the next University Catalog
- d. Graduate Programs in Business – Chelsey Decker
 - i. MBA 50th Anniversary is this year – distributed 50th anniversary lapel pins and encouraged all faculty to attend commencement to receive the commemorative 50th anniversary medallion; – will have a celebration on Sept. 13; inviting all graduates of the program; MBA graduation reception is Saturday at 11:00 a.m.; new DSIS emphasis – will offer first course for DSIS emphasis in August; MBAA is now KGSA; hired 16 GA’s for fall
 - ii. MPAcc – program update and new online option – rep from Risepoint visited campus regarding updating the MPAcc – now open to admit students outside of Kelce and will be offering the program in the accelerated online format – will launch January 2026;
 - iii. 140 graduate petitions for this May and summer; grad MBA for summer is up by 27%
- e. Student Engagement and Support – Holly Kent
 - i. Student Organizations – distributed year-end review of student organization activities and events (attached); FBLA has 5 students participating in the FBLA national competitions this year in Dallas
 - ii. Student Internships – Melissa Weed:
 - Hosted internship reception for this spring’s 17 interns; about 6-7 students applying for internship credit this summer

- f. Associate Dean Update – Lynn Murray
 - i. Summer CARES – may need help from KCOB faculty – she will put out a call if so
 - ii. Other items – working with Sarah Clausen to develop club materials and new view book; adding a residence hall living component to the first-year learning community this fall – Holly Kent will administer programs for these students
 - iii. BGS Induction Ceremony is Saturday at 10:00 a.m. (see below)
 - iv. Thanks to everyone who helped with the spring picnic
 - v. Dr. Murray and Ms. Davidson visited the Professional Sales Center at the University of Central Oklahoma – learned a lot; sales graduates report the highest starting salaries of all their business majors
- g. Faculty Chair Update – Alex Binder
 - i. Fall Faculty Development Workshop – not sure yet when/where it will be held but early in August prior to start of classes
 - ii. Thanked all who attended research workshop; encouraged faculty to collaborate using the distributed spreadsheet showing interests and ideas; summer is a great time to start their research projects; plan to organize “First Friday” gatherings in the fall to discuss research;
 - iii. Faculty Senate subcommittees need volunteers; please follow the reminder from Registrar about submitting grades on time (by Wednesday the 21st); also, report any incidence of academic dishonesty during finals on the Maxient system

VII. College Announcements

- a. Faculty Senate President for 2024-2025 is David Weaver
- b. Don't forget to update your Faculty Success profile!!
- c. BGS Induction is Saturday May 17 at 10:00 a.m. at Miller Theater in the Bicknell followed by joint BGS and MBA reception in the Bicknell lobby at 11:00 a.m.
- d. Kelce Spring Commencement – Saturday, May 17 at 1:00 p.m.; make plans to participate!

VIII. Old Business - none

IX. New Business - none

X. Adjournment - 4:10 p.m.

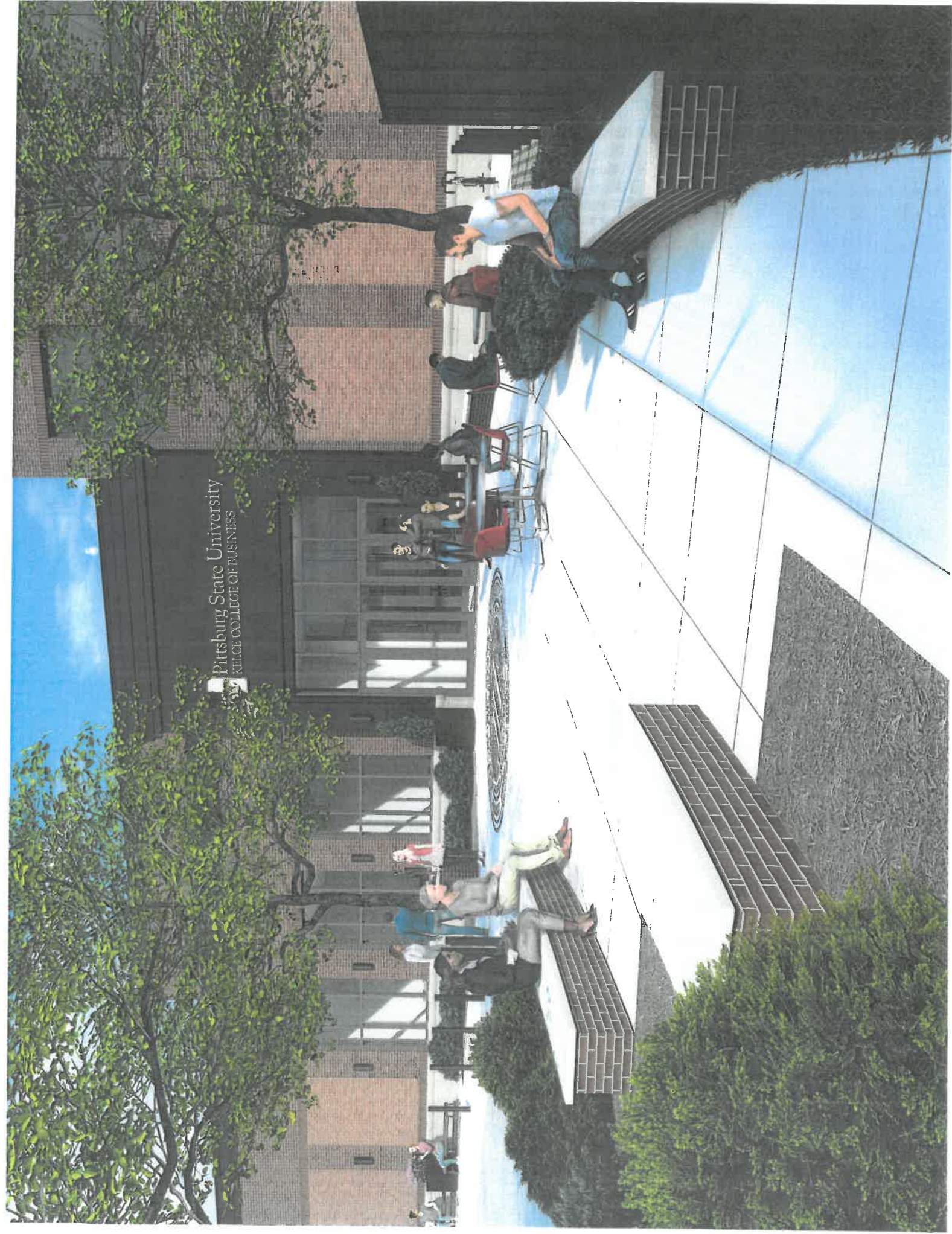
2025 Carnegie Classifications
Research Colleges and Universities; and
Opportunity Colleges and Universities: Higher Access and Higher Earnings

Alcorn State University
California State Polytechnic University-Humboldt
California State University-Bakersfield
California State University-Channel Islands
California State University-Chico
California State University-Dominguez Hills
California State University-Monterey Bay
California State University-San Bernardino
Central Washington University
Colorado State University Pueblo
CUNY Bernard M Baruch College
CUNY Lehman College
Dine College
Eastern Washington University
Marymount University
Morehouse College
New York Institute of Technology
Pace University
Pittsburg State University
Spelman College
St. John's University-New York
Sul Ross State University
SUNY Polytechnic Institute
Texas A & M International University
Tuskegee University
University of Detroit Mercy
University of Maryland Eastern Shore
University of Minnesota-Duluth
University of St Thomas
Western Illinois University
Western Washington University
Winston-Salem State University
Xavier University of Louisiana



PITTSBURG STATE UNIVERSITY

KELCE COLLEGE OF BUSINESS

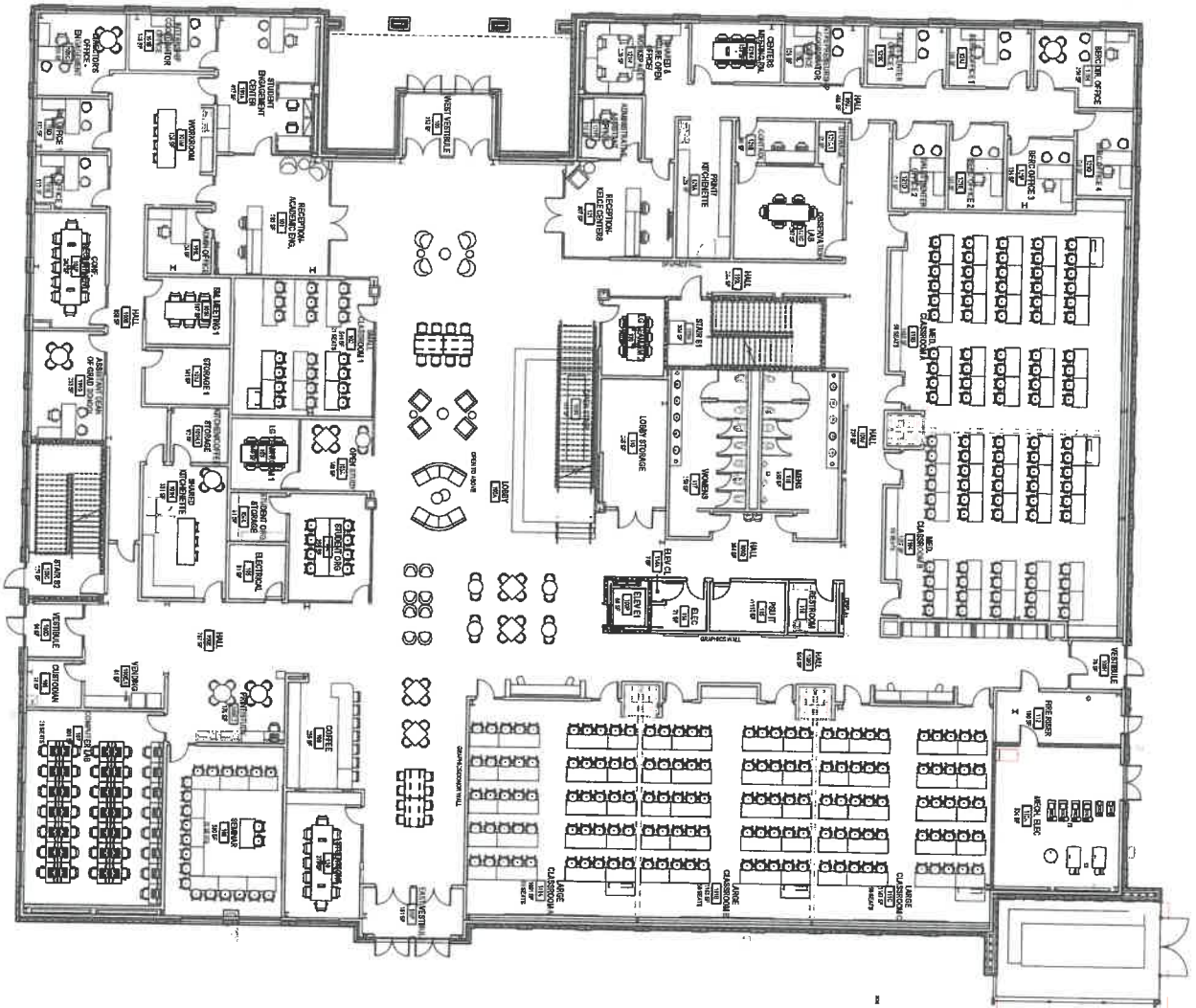


Pittsburg State University
KELCE COLLEGE OF BUSINESS

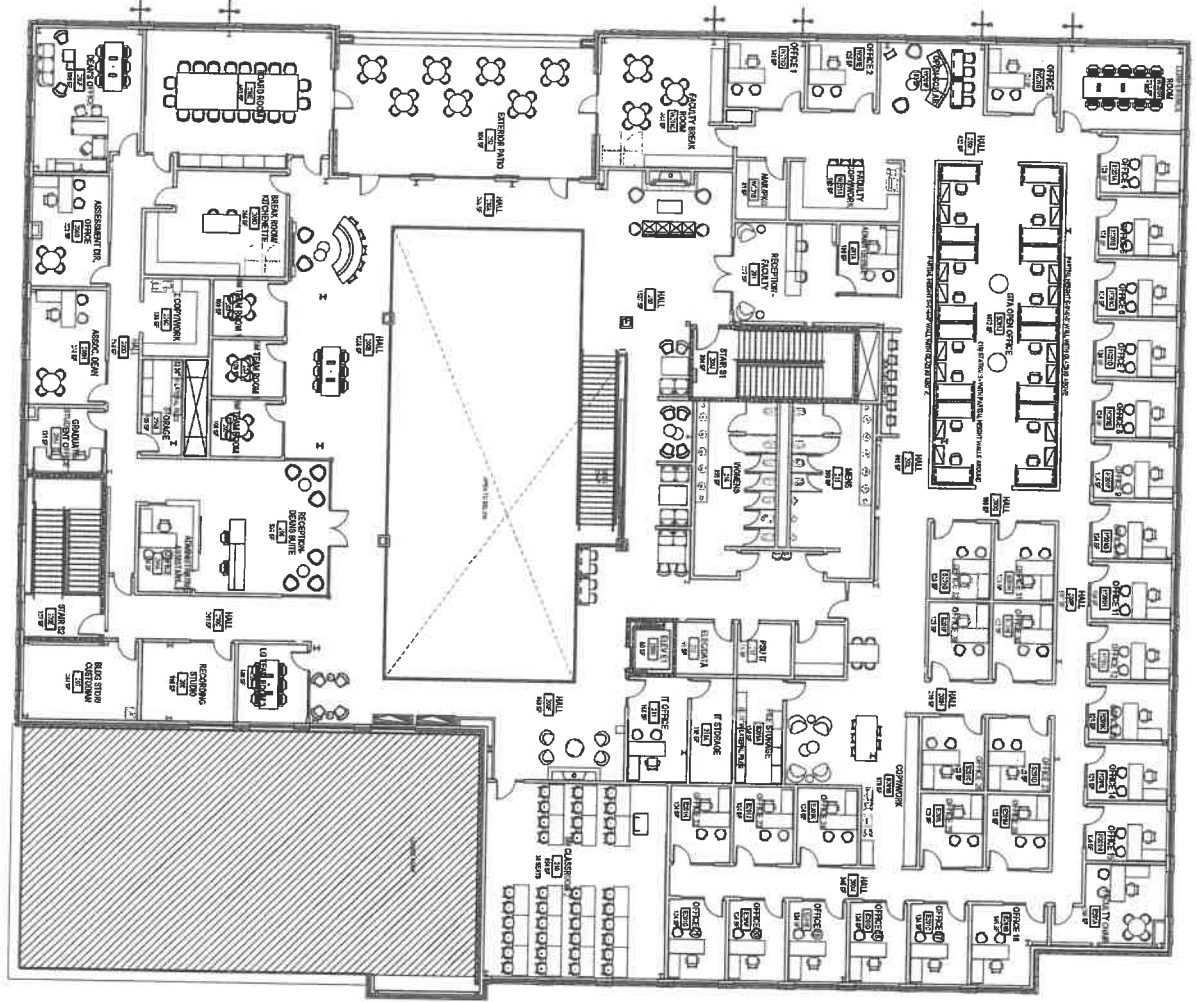




FIRST FLOOR - FURNITURE REFERENCE PLAN



SECOND FLOOR - FURNITURE REFERENCE PLAN



PITTSBURGH STATE UNIVERSITY
GORILLA RISING - KELCE COLLEGE OF BUSINESS
 210 N Broadway Street | Pittsburgh, PA 15262
 BUILDING NUMBER: 38500-00050

DRAWN BY: MP CHECKED BY: Cander

TENANT INFILL
 PACKAGE

PITT STATE
 PSU FACILITIES PLANNING
 1715 BROADWAY
 PITTSBURGH, PA 15262
 TEL: 412.326.6000

PROJECT NUMBER:
 Base Project #: A-015113
 Sub-Project #: 15150-00050
 TENDER #: 150482816

PROJECT TYPE:
 New Construction



CROSSLAND
 ARCHITECTS
 1500 10TH AVENUE
 PITTSBURGH, PA 15262
 TEL: 412.326.6000

LESSER
 1500 10TH AVENUE
 PITTSBURGH, PA 15262
 TEL: 412.326.6000





KELCE COLLEGE OF BUSINESS

Pittsburg State University

24-25

23-24 KELCE STUDENT ORGANIZATIONS

YEAR END REVIEW

DATA SCIENCE CLUB

Advisors: Dr. David Sikolia

President: Saatvik Sabarwal

- The club hosted one meeting.
- Attended a Data Science conference in Lawrence, KS

ECONOMICS CLUB

Advisor: Dr. Alex Binder

President: Johnny Harris

- Johnny Harris, Brendon Gahagan, Cole Smith and Logan Kunkler took third overall in the Politics, Philosophy & Economics League Competition in Ottawa, KS on April 11th.

FINANCE CLUB

Advisor: Dr. Connie Shum

President: Johnny Harris

- Guest Speakers from Finance Industries
- Fundraising: worked concessions at PSU football home games
- Traveled to New York City in April

FUTURE BUSINESS LEADERS OF AMERICA (FBLA-COLLEGIATE)

Advisor: Melissa Weed

President: Matthew Schmidt

- Recognized for having the largest chapter membership in the state of Kansas
- A new tradition: seniors who were actively involved in FBLA will be given FBLA cords to wear at graduation
- Events: Internship panel- featuring 3 student panelists, guest speaker- Scott Wedge
- State Awards: Matthew Schmidt, Trip Baker, Canyon Hendrickson, Jonah Sandford, Katy Burke, Eli Denton, Maggie Hopper, and Sarah Best placed in state competition and qualified for Nationals
- FBLA Nationals, Dallas, TX, May 2025- 5 students will be representing the Kelce College at Nationals: Maggie Hopper, Sarah Best, Eli Denton, Katy Burke and Canyon Hendrickson.
 - Fundraising to help cover expense: Pitt Power crowdfunding, Perry's Pork Rinds

INSTITUTE OF INTERNAL AUDITORS (IIA) STUDENT CHAPTER

Advisor: Dr. Gail Yarick

President: Taylor Pratt

- Nine new students completed the application to earn the IAEP certificate this year, and 6 students will complete the IAEP certificate requirements and earn their IAEP certificate at the end of SP25 semester. (We need to have more students working towards this certificate—please encourage your students to consider it).
- This year the IIA Student Chapter hosted 10 on-campus meetings, 8 of those included guest speakers (Joplin IMA members, UCF, Lead Bank, FORVIS, Leggett & Platt, Becker, PSU Internal Audit, ConocoPhillips).
- Four students and Dr. Yarick traveled to KC for an in-person IIA KC event in November, and 7 students and Dr. Yarick traveled to KC for an in-person IIA KC event in March. Several students also participated in virtual sessions with the IIA KC Chapter.

- Five students and Dr. Yarick traveled to Orlando, FL for 4 days in April for the Global Student Conference. All students participated in a group case competition and presented on stage in front of 100+ peers, educators, and professionals. Out of 18 teams, 3 of our student teams made the Top 6 (Taylor Pratt, Emma McCormack, & Lily Higgins). The top 6 teams presented a second time in the Finals and Taylor's team earned 3rd place.
- Specific IIA scholarship donations were received and awarded to students involved in the IIAEP certificate program (\$10,000)

INSTITUTE OF MANAGEMENT ACCOUNTANTS (IMA) STUDENT CHAPTER

Advisors: Mr. David Weaver

President: Emma Dunn

- The IMA student Chapter met with the Joplin IMA last fall and awarded 4 Scholarships to the IMA Association
- 1 CMA Gleim Scholarship.
- Planning to tour Millers Professional Imaging in the Fall

KELCE GRADUATE STUDENT ASSOCIATION (KGSA)

Advisor: Chelsey Decker

President: Tucker Jessip

- MBA Association was renamed to Kelce Graduate Student Association to better represent the expansion of graduate business offerings (MBA, MPAcc, MS HRD)
- Continued with hosting events to nurture the spirit of collegiality among graduate students and Kelce faculty & staff, including the Kelce Coffee's, the "Souper Bowl" event and an ice cream social.
- Hosted workshops on several topics including Professional Careers and Leadership, Job Packages and Fringe Benefits, Resume's, Outlook, and Professional Headshots
- Volunteer Hours: Pittsburg Artwalk & Lord's Diner
- Student activities included: Pie a Pitt!, Valentine's Day event, Kelce Easter Egg Hunt
- Social Events for GAs: Thanksgiving Potluck, Happy Hour at Guadalajara

MARKETING ASSOCIATION

Advisor: Dr. Phillip Frank

President: Chloe Shepard

- Students attended KC Ad Club's Spark Networking event in September 2024
- Hosted monthly meetings to recruit new members
- Participated in university events such as Trunk or Treat
- Held fundraisers to raise funds for a KC agency tour

WOMEN@WORK

Advisors: Holly Kent and Dr. Lynn Murray *President: Baylie Pitts*

- Ten (10) members attended the Kansas Chamber of Commerce Women in Business Conference in Topeka, KS
- Hosted the 5th Annual Women@Work Luncheon. Keynote: Dr. Susan Bon. "Katie Bakel Awards" for support and service were presented to Amanda Sukraw and Olivia Goebel.
- Other Events: Coffee and Conversation Reciprocity Event, PSU Homecoming, Credit Scores Workshop, Women's Health Session
- Socials: Ice Cream Social, Feliz Navi Guad Holiday Party, Galentine's, Pickleball
- Volunteer: Halloween Trunk or Treat
- Other: Boo Bag fundraiser
- 2025 PSU Outstanding Student Organization Advisor was presented to Holly Kent