



## Welcome to the Kelce Connection!

This newsletter represents a revival of the publication that began several decades ago to keep the alumni and friends of the Kelce College of Business up to date on all the great things happening on the corner of South Broadway and Cleveland Street in Pittsburg, Kansas. In this edition, you will learn that this corner will see significant changes in its appearance over the next few years as we prepare for a long-desired renovation and expansion of our facilities. This transformation is being made possible by our generous supporters and alumni like John and Susan Lowe who provided us with the initial gift to kick start the project. We have much planning and work to do, but it is exciting to get started! In addition, inside you will find stories about our outstanding students, meet our new faculty, and learn about some of our recent events and on-going programs. There is always something new happening in the Kelce College and we want to share these experiences with you. I hope you take a few moments not only to enjoy the newsletter, but to reconnect with us.

All the best,

**Paul W. Grimes, Dean**  
Kelce College of Business



KELCE  
COLLEGE OF BUSINESS  
Pittsburg State University

# Kelce Connection

pittstate.edu/business • SPRING 2016 NEWSLETTER

## New Kelce College of Business building project in the works

In 2015, PSU business alumni John and Susan Lowe pledged \$3 million to develop start-up plans and designs for facility improvements of the Kelce College of Business.

John and Susan Lowe both earned their Bachelor of Business Administration degrees in 1981. John worked for more than 30 years with ConocoPhillips and held various executive positions. He is on the board of directors of Phillips 66 and TransCanada Corporation, board chairman of Apache Corporation, and Senior Executive Advisor to Tudor Pickering Holt & Co. John credits his accounting instructor, retired professor emeritus Guy Owings, for his career choice and direction.

After a selection process last fall, Clark Huesemann Architects of Lawrence, Kan., was chosen to work with the Kelce College to plan and design the building improvements. Estimated cost of the building improvements is \$15-18 million.



John Lowe



Guy Owings

## New Leadership Appointments



Bienvenido Cortes,  
Associate Dean and  
MBA Director



Lynn Murray, Chair,  
Management and  
Marketing



Kevin Bracker, Chair,  
Economics, Finance  
and Banking



Eric Harris, Director  
for Research and  
Engagement



### 2015 emerging leader

Cate Neeley, 2008 BBA in accounting, was selected as a 2015 Emerging Leader by Internal Auditor magazine. She currently serves as assistant director and internal audit manager at the University of Kansas as well as the KU Medical Center.

"It's really exciting, and a little overwhelming, to be recognized as an Emerging Leader," Cate said.

"What is even better is how this shines a light on our office. Of the 15 auditors selected, I was the only one representing internal audit in higher education."



### Kelce picnic

The Kelce picnic was held in August 2015 to welcome students back to campus. Faculty members grilled hotdogs and served lunch to students and staff. The annual event is held to "cultivate a stronger affinity and allegiance to the Kelce College of Business."



### Taiwan business camp

Three students, Jeffrey Yankovich, Anthony Groves and Katie McGee, attended a business camp in Taiwan sponsored by a sister school, Chung Yuan Christian University.

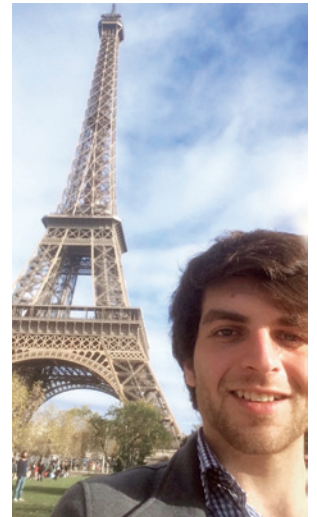
For three weeks last July, the students experienced in-class lectures, on-site company visits, and cultural trips. The camp provided a valuable and life-changing international experience to the students.

### La Rochelle, France, experience

by Dane Longan

During the fall 2015 semester, I had the excellent opportunity to study abroad in France via the PSU-La Rochelle, France, MBA Dual Degree program. Every day was a new adventure. There were always new things to discover, places to see, foods to try, and people to meet.

Since I'm not fluent in French, each day also presented new challenges. Ordinary tasks like buying groceries, ordering food, or asking for directions were major obstacles. Aside from taking business courses in a new educational environment, my experiences also helped me to further develop my problem-solving skills, nonverbal communication skills, as well as a new foreign language.



### Safe trick or treat

MBA Association members (Mollie Drapeau, Corey Jones and Gabe Harris) participated in PSU's Safe Trick or Treat Night at the Weede on October 28, 2015.

### Phillips 66 Day

Phillips 66 Day was held in September, 2015. Company representatives gave presentations on career opportunities as well as provided refreshments, gifts, and games in front of Kelce.





## Outstanding Alumni Award

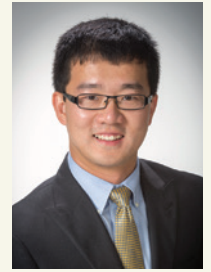
Ronnie Chang received the 2015 Dr. Kenneth K. Bateman Outstanding Alumni Award in October. The award recognizes alumni who have demonstrated significant professional growth and advancement since graduation. Ronnie is originally from Taiwan and earned his bachelor's degree in business from Pittsburg State and an MBA from George Washington University. He began his career in corporate banking with Citibank, Taipei, and currently serves as General Manager/Vice President of IBS Division at Inteplast Group. He and his wife, Leah Lee, who is also a PSU alumnus, live in New Jersey. They have two children: Roselynn, a college sophomore, and Leslie, a high school senior.



Ronnie Chang

## New Kelce faculty

Dr. Fang Lin is a new Assistant Professor of Finance in the Dept. of Economics, Finance & Banking. He received his Ph.D. from the University of Oklahoma, M.A. in economics from University of Nevada-Las Vegas, and B.S. in economics from East China University of Science and Technology. Dr. Lin teaches undergraduate business finance, financial institutions and markets, and seminar in financial management.



Fang Lin

Dr. Lin's research interest is empirical corporate finance, with a focus on executive compensation and mergers and acquisitions. He is a member of the Financial Management Association and American Finance Association. He loves running, traveling, and watching sports.



Jeff Poe

In October 2015, Jeff Poe, Kelce Executive in Residence, traveled to Uganda with other business professionals to judge a "Shark Tank" competition. The student competition is a partnership between the Global Orphan Project (GO Project), headquartered in Kansas City, and the Uganda Christian University (UCU). Senior students at UCU developed business plans for entrepreneurial projects in hopes of gaining funding through the competition.

The "Shark Tank" competition included two full days of student project presentations and a third day in which the finalists were questioned in detail about their plans.

The winners included a student who was expanding her beekeeping and honey-making business, and a student group who identified an agriculture-related arbitrage opportunity and built a plan to make it operational. Aside from judging the current projects, Jeff also visited the past competition winners, which included a sizable tilapia farm on Lake Victoria.

"I learned so much from the students and the other people on our investor panel," said Poe. "In most of my classes at PSU, we do a project which resembles the popular TV series, Shark Tank; however, in class we call it "Gorilla Cage." It is my favorite project because I get to see the creativity of our students."



Michael Davidsson

The Kelce College of Business is involved in a cooperative economic development program with the city of Pittsburg and the Pittsburg Chamber of Commerce aimed at improving the local business environment in the Pittsburg Micropolitan Area. As a leading proponent of Kelce College's economic engagement activities, Dr. Michael Davidsson began writing and publishing the quarterly Pittsburg Micropolitan Area Economic Report and the annual Pittsburg Micropolitan Area Economic Profile in 2014.

With generous financial support from the city, more than 1,000 copies per issue are printed, with 850 mailed to local businesses and the rest to clients of Pittsburg and its Chamber of Commerce, and to other constituents. Michael also presents the economic outlook for southeast Kansas in the fall Pittsburg Economic Outlook Conference in collaboration with Wichita State University. He serves as the resource speaker for area media outlets interested in micropolitan and regional economic news. Finally, he develops and updates an internet data site for the Kelce College of Business which provides useful comparative economic statistics on Pittsburg, county, state, and national variables.

Dr. Theresa Presley is an assistant professor in the Department of Accounting and Computer Information Systems (ACIS). She received her B.S.B.A. and M.A. in economics from the University of Arkansas, her Masters in Accountancy from the University of Texas-Arlington, and Ph.D. from the University of Memphis. Dr. Presley is a CPA. Prior to joining Kelce College in August, Theresa taught at Kansas State University and Truman State University. Before that, she was also a controller at a national retailer, external auditor in public accounting, and a senior financial analyst.



Theresa Presley

Dr. Presley's primary teaching areas are financial reporting and systems. She has published in scholarly journals including *Advances in Accounting* and *Accounting Horizons*. A Barton County, Missouri native, Dr. Presley enjoys studying Missouri/Kansas history. She and her husband, Adrien, also a business professor, have four children, Janette, Nick, Gigi, and Evie.



## Faculty authors

Two Kelce professors, Dr. Eric Harris (middle) and Dr. Don Baack (right), were honored as distinguished textbook authors along with other PSU faculty at the annual Faculty Authors reception in October.

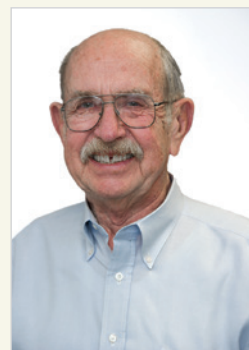


## Ultra runner

Dr. Kevin Bracker placed first in the 50-mile run in Derby, Kansas, in October. Kevin said, "There is the challenge of setting a difficult goal, training for months to achieve that goal, and then setting out to accomplish it which is rewarding. While I finished "first" in the 50-mile run, that had more to do with there being only one entrant than it did with posting an impressive time."

## In Memory

Longtime Kelce management professor, Dr. Thomas M. Box, passed away in May, 2015. Tom was born in Cleveland, Ohio. He earned both his bachelors and MBA degrees



Tom Box

from the University of Tulsa and his Ph.D. in management from Oklahoma State University. Tom served in the U.S. Marine Corps and in various executive positions in private industry. He joined Pittsburg State University in 1990 and taught undergraduate and graduate management courses until his retirement in 2013. Tom was an outstanding educator, a published author, consultant, and mentor and friend of students and faculty. He is survived by his wife, Barbara, three children, and grandchildren.

## Please keep us informed.

Stay in touch by sending your contact information and news updates to: [cob@pittstate.edu](mailto:cob@pittstate.edu)

## Your gifts make a difference!

If you would like to support the Kelce College of Business, please go to: [www.pittstate.edu/givenow](http://www.pittstate.edu/givenow)

*Thank you for your support.*

## DO BUSINESS LIKE A GORILLA

[pittstate.edu/mba](http://pittstate.edu/mba)

- Ranked #2 most affordable MBA programs in the country by Top Management Degrees
- Specialize in accounting, general administration or international business
- Pittsburg State's Kelce College of Business is fully accredited by the Association to Advance Collegiate Schools of Business (AACSB)

