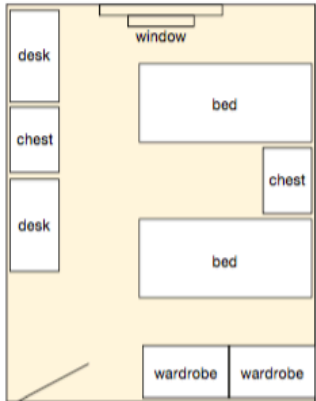


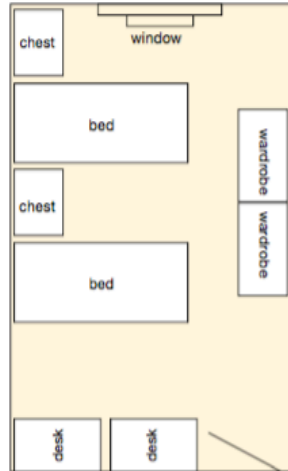
ROOM LAYOUTS

Due to room configurations and building structures, layout measurements are approximate. All furniture is portable so layouts may vary.

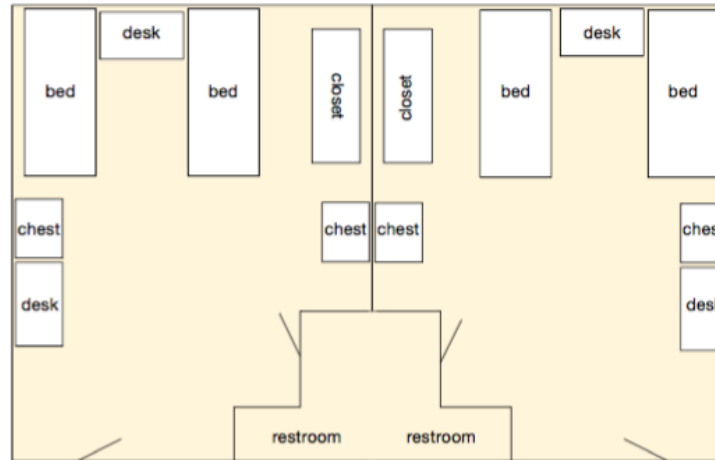
Bowen, Tanner, Tanner Annex & Trout
12'6"x15'



Dellinger & Nation
12'x17'6"



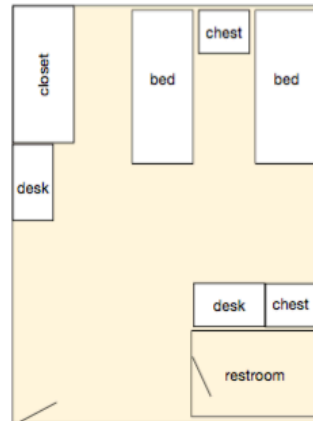
Willard - Double, Shared Bath
15'x19"



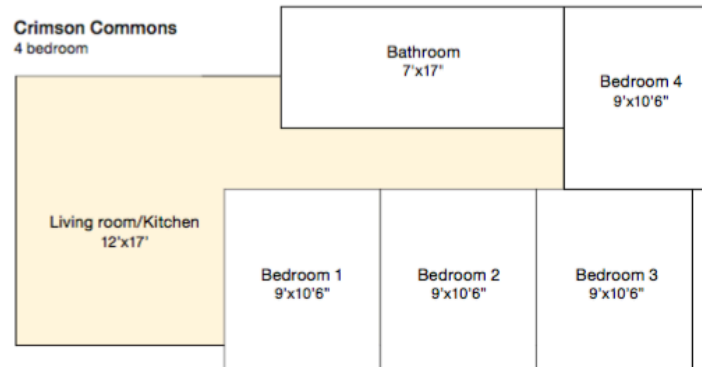
Willard - Single
12'x13'



Willard - Double
15'x19'



Crimson Commons
4 bedroom



Hall Facts:

Approximate Sizes: The layouts and measurements are approximate. Please note that many halls have single, double, and triple occupancy rooms and these measurements account for a standard double room and its approximate size. The layouts included are only samples of each room. Not every room in every hall looks exactly alike. With all portable furniture, students can change their layouts.

Each room includes a neutral room color, vertical blinds, phone line, expanded basic cable, direct wired and wireless Ethernet access, Air Conditioning, and is tobacco free. All buildings are co-ed by floor, except in Willard (co-ed by suite) and Crimson Commons (co-ed by apartment).

Public Areas Available in Each Hall:

- Kitchenettes in Crimson Commons, Bowen Hall, Dellinger Hall, Tanner Complex, Trout Hall, and Nation Hall
- Laundry facilities in every hall
- Bathroom facilities on each floor shared by residents of the floor, with the exception of Willard and Crimson Commons
- Lounge area equipped with TV, microwave, study tables, couches and chairs.

List of room furniture per person with dimensions

-Bed - overall size 38"W x 86"L

-Mattress - 36"W x 80"L

-Wardrobes - 42"W x 24"D x 72"H (except Crimson Commons and Willard)

-Chest - 30"W x 24"D x 30"H

-Desk - 42"W x 24"D x 30"H

-Chairs - 20.6"W x 20.6"D x 33"H